

**G: Gear type pump range**

**G: A Style:**



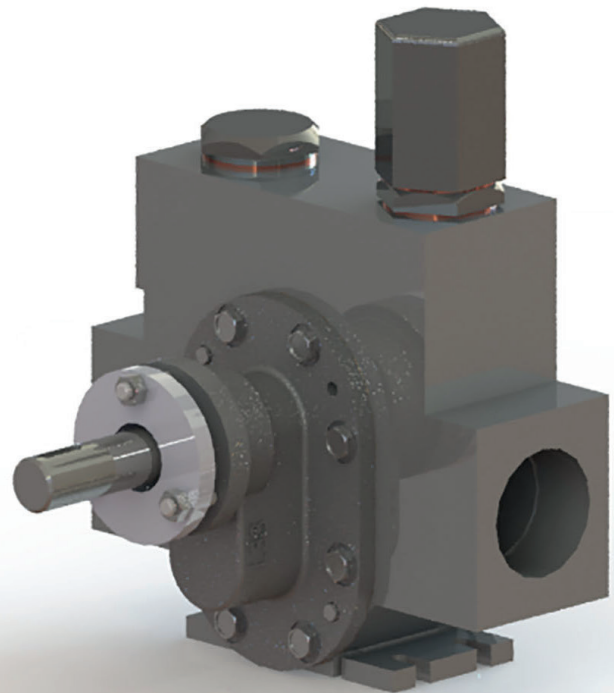
Materials: CI | CS



**General purpose pumps**

The GA range is Albany's general purpose pump, the origins of which can be traced back to 1901 when the company first started. It is capable of handling the widest variety of liquids, including extremely viscous. These pumps offer a durable, robust design ensuring ease of use and maintenance.

With a large choice of pump sizes, materials and sealing options to suit all applications, the GA range can be adapted to suit any customer or OEM application. Bespoke mountings and additional components and pipework allow simplified fitment to the final application. Use CEFG pumps for 3.1 certification.



Albany's 24-page brochure is available as a download at [www.albany-pumps.co.uk](http://www.albany-pumps.co.uk)



Maximum working pressure <b>25 barg</b>	Pump size range <b>1/2" - 4"</b>	Maximum temperature <b>200°C</b>	Flow rate <b>9.5-2273 L/min</b>
---	----------------------------------	----------------------------------	---------------------------------

AL Aluminium | CS Cast Steel | CI Cast Iron | GM Gunmetal | HY Hastelloy | NR Ni-resist | NY Nylon | PP Polypropylene | SD Super Duplex | SS Stainless Steel  
 General and Chemical | Bitumen | Fire | Dispenser Machines | Food Industry | Lubrication | Marine | Oil & Gas | Refrigeration | Sugar

[www.albany-pumps.co.uk](http://www.albany-pumps.co.uk) +44 (0) 1594 842 275

**Head Office and Manufacturing Centre**

Albany Engineering Company Ltd  
Church Road, Lydney  
Gloucestershire, GL15 5EQ  
United Kingdom

t: +44 (0) 1594 842 275  
Head Office Option 1

e: [salesdept@albany-pumps.co.uk](mailto:salesdept@albany-pumps.co.uk)

**Service and Repair Centre**

Albany Engineering Company Ltd  
Richter Works, Garnett Street  
Bradford BD3 9HB  
United Kingdom

t: +44 (0) 1594 842 275  
Service and Repair (Option 2).

e: [servicedept@albany-pumps.co.uk](mailto:servicedept@albany-pumps.co.uk)



E&OE: Errors and omissions excepted. All content contained herein is subject to change at the Company's discretion without notice.

## G: A Style:

- Versatile general purpose pump capable of handling the widest variety of viscous liquids together with simple robust design ensuring ease of maintenance
- Plain internal bearings cater for self lubricating liquids, external lubrication being available when required.
- Available with double helical rotors for quiet pulse-free running
- Simple design with two moving parts
- Temperature 200°C max. (320°C with steel casing)
- Pressures to 25 barg (350 psig)
- Capacity range 9.5 L/min – 2273 L/min
- Can be supplied without integral safety relief valve
- Leaflet shows standard sizes, but special capacities can often be catered for

### Some of the many liquids handled by Albany Pumps

REFINED TAR	VISCOSE	SILICATE OF SODA	BITUMEN
GLUCOSE	GLUE	PAINTS, RESINS	VARNISH
SIZE, WAX	MOLASSES	FATS	SOAP
CHOCOLATE	ALL OILS	ASPHALT	PRINTING INK
COCOA BUTTER	GREASE	PETROL	PARAFFIN
WINES & SPIRITS	FOODSTUFFS	ACIDS, ALKALIS	POLYMERS

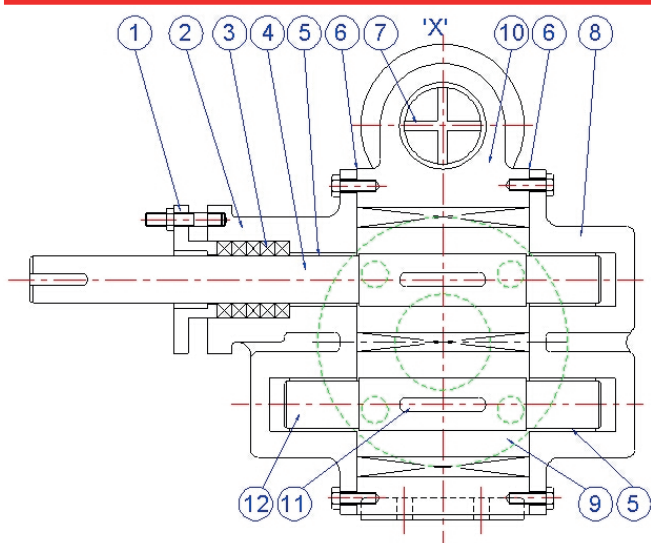
### SPECIFICATION

<b>Pump Casing:</b>	as standard carbon steel to ASTM A216 WCB or cast iron to BS452 as standard with option of steel
<b>Rotors:</b>	as standard cast iron or carbon steel Options for nitrided steel, phosphor bronze, stainless steel, or ni-resist Spur gears are standard up to AP090 with double helical optional for AP060 to AP090. Double helical rotors are standard for AP100 to HD140
<b>Shafts:</b>	usually hardened and ground steel, can also be supplied in stainless steel AISI 316 for
<b>Internal Bearings:</b>	for most liquids a PTFE based bearing is used bushes can also be supplied in cast iron, phosphor bronze or carbon
<b>Sealing:</b>	packed with PTFE based packing, or mechanical seals.
<b>Mounting:</b>	foot mounted or flange mounted pumps are supplied as standard

Maximum working pressure <b>25 barg</b>	Pump size range 1/2" - 4"	Maximum temperature <b>200°C</b>	Flow rate <b>9.5-2273 L/min</b>
---	---------------------------	----------------------------------	---------------------------------

### PERFORMANCE – powers and flows typical for 3.5 BARg

Pump Frame Size	95% of Theoretical output Litres/rev	Maximum viscosity 3,000 centistokes 500 RPM		Maximum viscosity 2,000 centistokes 720 RPM		Maximum viscosity 1,200 centistokes 960 RPM		Maximum viscosity 750 centistokes 1420 RPM	
		L/min	kW	L/min	kW	L/min	kW	L/min	kW
AP040	.0194	9.5	.37	13.9	.37	18.6	.37	27.7	.56
AP050	.031	15.5	.37	22.3	.56	30.0	.55	44.0	.75
AP060	.0434	21.4	.56	32.3	.75	42.7	.75	63.6	1.1
AP070	.0687	35.5	.75	50.0	1.1	65.9	1.5	97.7	2.2
AP080	.108	54.1	1.5	80.9	1.5	107.7	2.2	159	3
AP090	.162	80.9	1.5	117	1.5	156	2.2	230	4
AP09W	.213	104	3.0	154	3.5	208	4.0	313	6.5
AP100	.195	100.5	2.2	145	3.0	187	4.0	277	5.5
HD030	.273	136	4.0	197	4.0	264	5.5	390	7.5
HD040	0.386	195	4.1	277	5.6	368	7.5	520	8.5
HD050	0.491	245	5.6	350	7.5	473	7.5	650	9.5
HD060	0.62	310	7.5	445	7.5	600	11.2	880	14.0
HD070	0.805	405	7.5	582	11.2	773	11.2	REFER TO WORKS	
HD080	1.00	509	11.2	718	11.2	955	14	REFER TO WORKS	
HD100	1.32	618	11.2	950	15.0	1273	22.4		
HD110	2.09	1045	16.0E	1500	22.0E	2000	31.0E		
HD120	3.0	1364	18.6	Maximum speed 600 rpm					
HD140	5.0	2273	37.3						



- 1 Gland
- 2 Front Cover
- 3\* Gland Packing
- 4\* Driving Shaft
- 5\* Bushes (4 per set)
- 6\* Gaskets
- 7 Relief Valve comprises...
- 8 Back Cover
- 9\* Rotors (2)
- 10 Body
- 11\* Key (2)
- 12\* Following Shaft

### PARTS LIST

- Valve
- Adjusting screw
- Locknut
- Spring - (AP11 & over)
- Spring Header
- Fibre Washer

### SPARES

Items we recommend as spares are indicated\*  
When ordering spares please quote pump size and the pump serial number usually stamped in position 'X'.

Maximum working pressure 25 barg	Pump size range 1/2" - 4"	Maximum temperature 200°C	Flow rate 9.5-2273 L/min
----------------------------------	---------------------------	---------------------------	--------------------------