

G: Gear type pump range

G: G Style:

3.1 Certified oil and gas pumps

The GG range is a robust pump series designed with the oil and gas industry in mind. These pumps are often used in applications where a high system pressure is required.

All materials are certified 3.1 (actual). The pumps can be compliant with API 676 making them suitable for a variety of API applications recognising mechanical seal, potential relief valve and bedplate with drain requirements. Petrochemical bolting options are available for this range. NACE specifications can be provided.

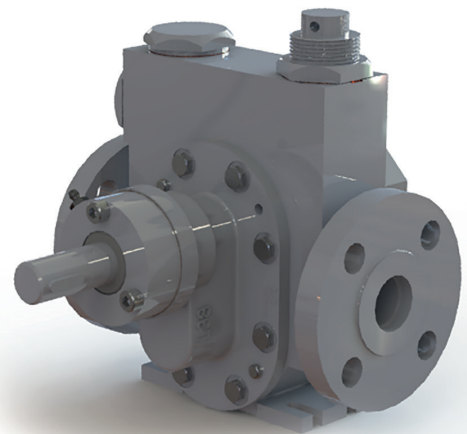
Features

- Flanges to ASA 150 lb. RF or 300lb. RF, alternately screwed branches with NPT threads for sizes below 1½" diameter.
- Mechanical seals with a throttle bush.
- Optionally a thrust race to absorb any resultant axial forces on the drive shaft from the seal or from hydraulic forces.
- Product lubricated bearings suitable for use with hydrocarbon-based liquids are fitted.
- The bearings are available in two patterns: firstly to approx. 10 barg and secondly to approx. 30 barg both depending on viscosity and severity of service.
- Foot or flange mounting designs are available and the prime mover can be an electric motor or an air motor. Fabricated steel bedplates with drain rim, spacer couplings and spark-resistant coupling guards are supplied.
- If an integral relief valve is required, it is available on all pumps.
- ATEX compliant



Materials: CS | SS

 **NACE API**



Applications include:

- Lubrication of turbines and compressors.
- Transfer and pressurisation of fuel oil for burners.
- Solvent service.
- Provision of product for refinery analysis and sampling systems. Offshore oil transfer
- Offshore chemical transfer with 316 stainless steel casings.

Albany's 24-page brochure is available as a download at www.albany-pumps.co.uk



Maximum working pressure 60 barg	Pump size range 1/2" - 4"	Maximum temperature 220°C	Flow rate 25-1400 L/min
---	---------------------------	----------------------------------	--------------------------------

AL Aluminium | CS Cast Steel | CI Cast Iron | GM Gunmetal | HY Hastelloy | NR Ni-resist | NY Nylon | PP Polypropylene | SD Super Duplex | SS Stainless Steel
 General and Chemical | Bitumen | Fire | Dispenser Machines | Food Industry | Lubrication | Marine | Oil & Gas | Refrigeration | Sugar

www.albany-pumps.co.uk +44 (0) 1594 842 275

Head Office and Manufacturing Centre

Albany Engineering Company Ltd
Church Road, Lydney
Gloucestershire, GL15 5EQ
United Kingdom

t: +44 (0) 1594 842 275
Head Office Option 1

e: salesdept@albany-pumps.co.uk

Service and Repair Centre

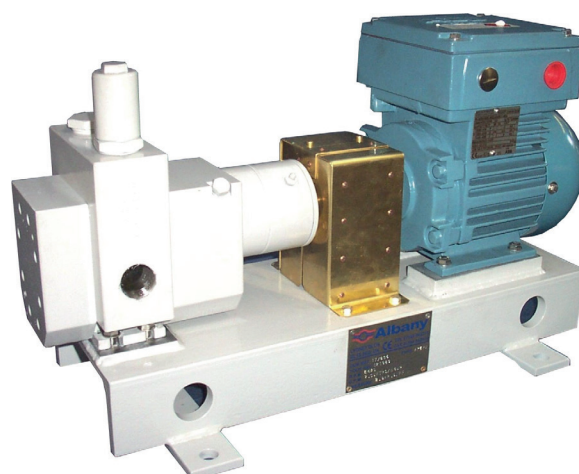
Albany Engineering Company Ltd
Richter Works, Garnett Street
Bradford BD3 9HB
United Kingdom

t: +44 (0) 1594 842 275
Service and Repair (Option 2).

e: servicedept@albany-pumps.co.uk

PERFORMANCE – powers and flows typical for 3.5 BARg

Pump Frame Size	95% of Theoretical output Litres/rev	Maximum viscosity 3,000 centistokes 500 RPM		Maximum viscosity 2,000 centistokes 720 RPM		Maximum viscosity 1,200 centistokes 960 RPM		Maximum viscosity 750 centistokes 1420 RPM	
		L/min	kW	L/min	kW	L/min	kW	L/min	kW
AP040	.0194	9.5	.37	13.9	.37	18.6	.37	27.7	.56
AP050	.031	15.5	.37	22.3	.56	30.0	.55	44.0	.75
AP060	.0434	21.4	.56	32.3	.75	42.7	.75	63.6	1.1
AP070	.0687	35.5	.75	50.0	1.1	65.9	1.5	97.7	2.2
AP080	.108	54.1	1.5	80.9	1.5	107.7	2.2	159	3
AP090	.162	80.9	1.5	117	1.5	156	2.2	230	4
AP09W	.213	104	3.0	154	3.5	208	4.0	313	6.5
AP100	.195	100.5	2.2	145	3.0	187	4.0	277	5.5
HD030	.273	136	4.0	197	4.0	264	5.5	390	7.5
HD040	0.386	195	4.1	277	5.6	368	7.5	520	8.5
HD050	0.491	245	5.6	350	7.5	473	7.5	650	9.5
HD060	0.62	310	7.5	445	7.5	600	11.2	880	14.0
HD070	0.805	405	7.5	582	11.2	773	11.2	REFER TO WORKS	
HD080	1.00	509	11.2	718	11.2	955	14	REFER TO WORKS	
HD100	1.32	618	11.2	950	15.0	1273	22.4		
HD110	2.09	1045	16.0E	1500	22.0E	2000	31.0E		
HD120	3.0	1364	18.6	Maximum speed 600 rpm					

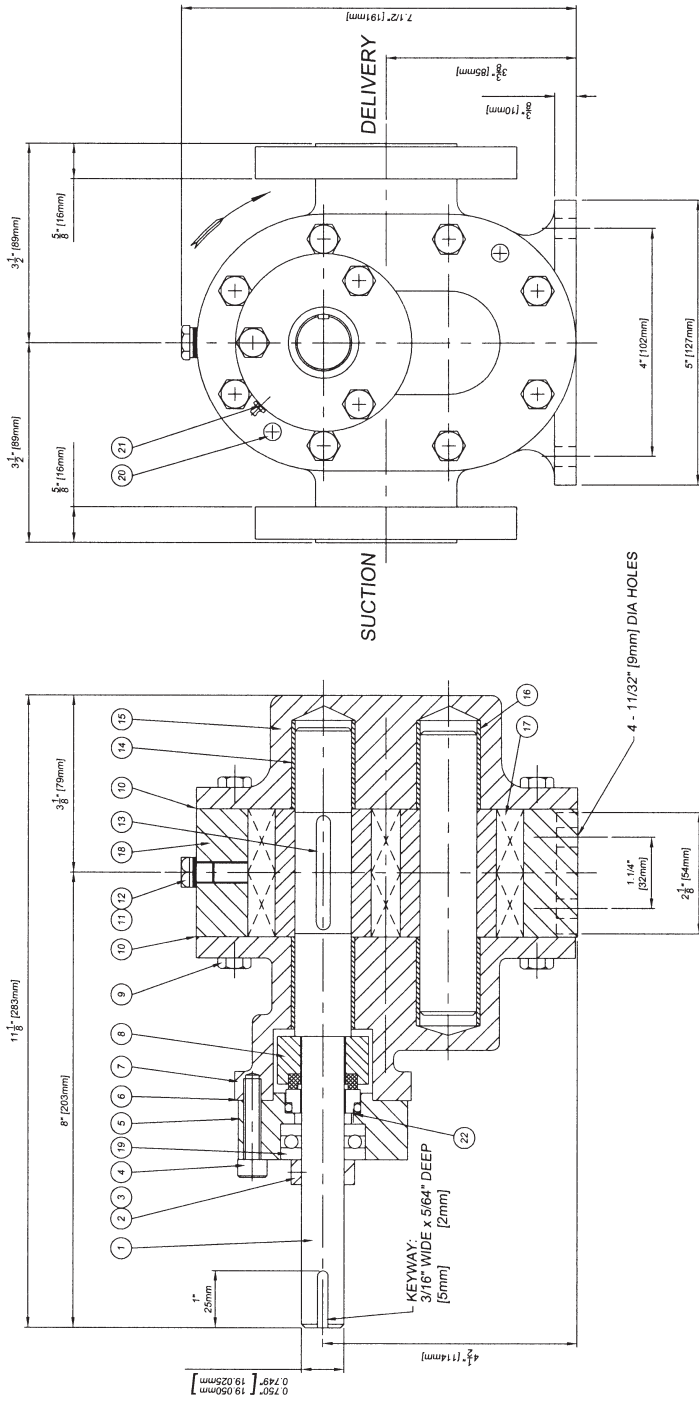


High suction pressure (63 bars) crude oil sampling pump. Model AP070.

Maximum working pressure 60 barg	Pump size range 1/2" - 4"	Maximum temperature 220°C	Flow rate 25-1400 L/min
---	---------------------------	----------------------------------	--------------------------------

Typical Drawing and Parts List for Albany Carbon Steel Gear Pump to API 676 SPECIFICATION

IF IN DOUBT ASK



SUCTION & DELIVERY BRANCHES FLANGED 1.1/4" ANSI 150 LBS RF
 5" (127mm) DIA WITH 4 x 5/8" (16mm) DIA HOLES ON 3.7/8" (98mm) P.C.D
 RAISED FACE: 2.7/8" (73mm) DIA x 1/16" (2mm) HIGH

ITEM No.	DESCRIPTION	MATERIAL	N. OF
1	DRIVING SHAFT	NITRALLOY	1
2	COLLAR	MILD STEEL	1
3	GRUBSCREW	2BA x 3/16"	HIGH TENSILE STEEL 2
4	S.H. CAPSCREW	5/16" UNC x 1.30"	HIGH TENSILE STEEL 3
5	CLAMPING PLATE	21688	MILD STEEL 1
6	GASKET	21698	1
7	FRONT COVER	25373	STEEL 1
8	MECH SEAL	CRANE T2 3/4" BR171	1
9	SETScrew	5/16" UNC x 3/4"	HIGH TENSILE STEEL 16
10	GASKET	27288	1
11	FLUG	14" BSP	MILD STEEL 1
12	FIBRE WASHER		FIBRE 1
13	KEY	1/4" x 3/16" x 2"	MILD STEEL 1
14	BUSH	18DU24	STEEL-PTEE 4
15	BACK COVER	7037	STEEL 1
16	FOLLOWING SHAFT	27369	NITRALLOY 1
17	ROTOR	28334	CARBON STEEL 2
18	BODY	22024	STEEL 1
19	THRUST FACE	LT34"	1
20	DOWEL	5/16" DIA x 1"	HARDENED STEEL 4
21	LUBRICATOR	1/8" BSP	STEEL 1
22	ANTI-ROTATION PIN	3mm x 5mm	STEEL 1
23			
24			
25			

Albany pumps LYDNEY, GLOUCESTERSHIRE, ENGLAND WWW.ALBANY-PUMPS.CO.UK		Description SECTIONAL ARRANGEMENT API MECHANICAL SEAL PUMP WITH THRUST BEARING	
Material: Section: Part No.	Approx Weight: 156G	Drawn By: JCC Date: 26/2/03 Scale: 1:1	Drg No. 29904 ISS. No. 1
Notes: JOB No. 9/0901			
PUMP DRAWN: TOP DRIVE/CLOCKWISE			
Limits & Tolerances: Dimensions in inches. Drawn 1st angle projection.	Particulars of Alteration	Rev. Date Drawn Approved Sheet	
1	11/6/92	DM	FIRST DRAWN