

G: Gear type pump range

G: D Style:



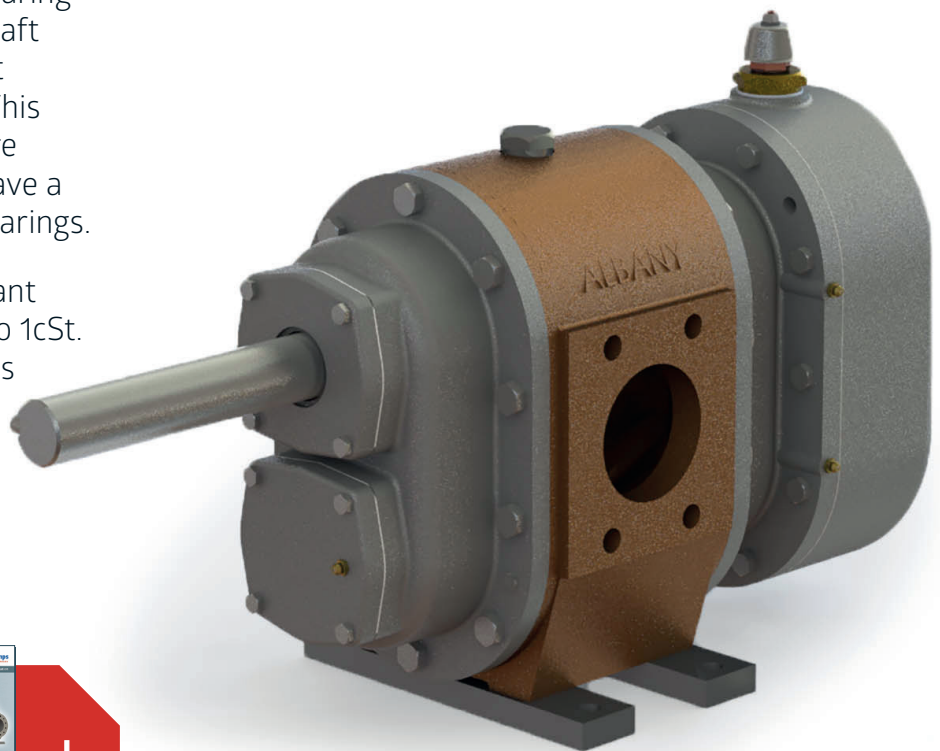
Materials: **CI | CS | SS | GM**



3.1 certified Fire/foam pumps (remote bearing)

The GD range is a semi-remote bearing design pump. In this design the shaft bearings do not come into contact with the product being pumped. This is important for applications where the liquids being pumped could have a detrimental effect on the shaft bearings.










These pumps are NFPA20 compliant and can handle viscosities down to 1cSt. Suitable for foam type applications involving testing with water or extremely low viscosity foams.



Albany's 24-page brochure is available as a download at www.albany-pumps.co.uk



Maximum working pressure 220 barg	Pump size range 1 1/2" - 4"	Maximum temperature 180°C	Flow rate 230-1400 L/M
--	------------------------------------	----------------------------------	-------------------------------

- AL** Aluminium | **CS** Cast Steel | **CI** Cast Iron | **GM** Gunmetal | **HY** Hastelloy | **NR** Ni-resist | **NY** Nylon | **PP** Polypropylene | **SD** Super Duplex | **SS** Stainless Steel
 General and Chemical |  Bitumen |  Fire |  Dispenser Machines |  Food Industry |  Lubrication |  Marine |  Oil & Gas |  Refrigeration |  Sugar

www.albany-pumps.co.uk +44 (0) 1594 842 275

Head Office and Manufacturing Centre

Albany Engineering Company Ltd
Church Road, Lydney
Gloucestershire, GL15 5EQ
United Kingdom

t: +44 (0) 1594 842 275
Head Office Option 1

e: salesdept@albany-pumps.co.uk

Service and Repair Centre

Albany Engineering Company Ltd
Richter Works, Garnett Street
Bradford BD3 9HB
United Kingdom

t: +44 (0) 1594 842 275
Service and Repair (Option 2).

e: servicedept@albany-pumps.co.uk