

G: Gear type pump range

G: J Style:



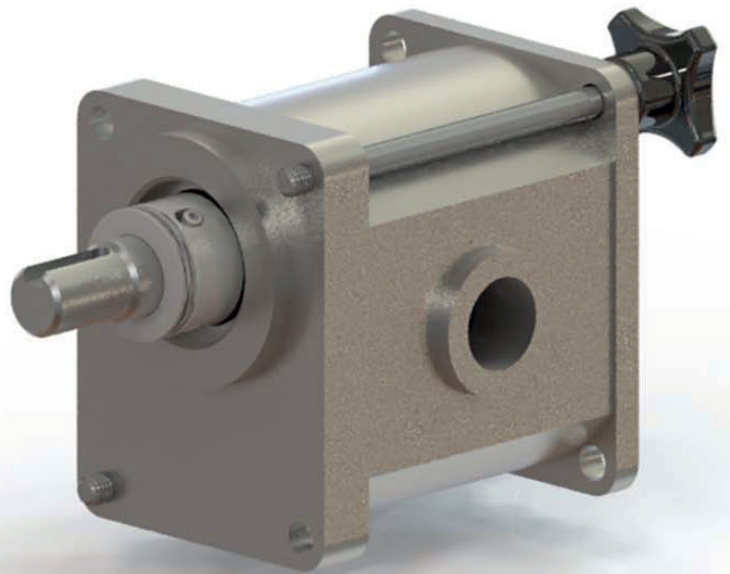
Materials: **AL** | **HY** | **SS**



Fast maintenance and hygienic pumps

The GJ range is Albany's stainless steel series of pumps, designed primarily for the bottle filling, dosing, sampling and chemical transfer industries. All components are machined to a high standard. Designed with a three-piece housing for easy cleaning and maintenance.

The GJ range extends from 5 to 90 litres per minute and up to seven bar. This range can be supplied with a variety of different industry standard connections, including BSP male and female and IDF, ILC, RJT or Tri-clamp. The pumps are compact and easy to strip. The non-drive end allows easy and tool-free maintenance.



Albany's 24-page brochure is available as a download at www.albany-pumps.co.uk



| | | | |
|--|--------------------------------------|---|-----------------------------|
| Maximum working pressure 7 barg | Pump size range 1/2" - 1 1/2" | Maximum temperature 50°C (100°C special) | Flow rate 5-90 L/min |
|--|--------------------------------------|---|-----------------------------|

- AL Aluminium | CS Cast Steel | CI Cast Iron | GM Gunmetal | HY Hastelloy | NR Ni-resist | NY Nylon | PP Polypropylene | SD Super Duplex | SS Stainless Steel
 General and Chemical | Bitumen | Fire | Dispenser Machines | Food Industry | Lubrication | Marine | Oil & Gas | Refrigeration | Sugar

www.albany-pumps.co.uk +44 (0) 1594 842 275

Head Office and Manufacturing Centre

Albany Engineering Company Ltd
Church Road, Lydney
Gloucestershire, GL15 5EQ
United Kingdom

t: +44 (0) 1594 842 275
Head Office Option 1

e: salesdept@albany-pumps.co.uk

Service and Repair Centre

Albany Engineering Company Ltd
Richter Works, Garnett Street
Bradford BD3 9HB
United Kingdom

t: +44 (0) 1594 842 275
Service and Repair (Option 2).

e: servicedept@albany-pumps.co.uk

Albany Pumps

G: J Style: JS100 range Fast maintenance and hygienic pumps

MAIN FEATURES

- Quick Strip
- Compact Design
- Bi - Rotational
- High Efficiency
- Self Priming
- Special Gear Profile

APPLICATION

The JS100 series consists of four models constructed in Stainless Steel. They are used to handle a wide range of products for bottle filling, dosing, sampling and transfer, in the Food, Chemical and associated industries.

CONSTRUCTION

All components are fully machined to a high standard. Releasing the two hand nuts allows easy dismantling of the three piece housing. The shaft assembly complete with mechanical seal can be withdrawn through the front cover.

MATERIALS

| | |
|------------|-----------------------|
| Body | ANSI 316 |
| End Covers | ANSI 316 |
| Shafts | ANSI 316 |
| O – Rings | Viton |
| Bearings | Glass filled PTFE |
| Gears | Non galling Stainless |



OPTIONS

| | |
|---------------------------------------|--|
| Shaft sealing | Mechanical seal with viton sealing and stainless/carbon faces or tungsten carbide faces. Optional lip seal in viton or EPDM. |
| Shafts ANSI 440 | Hardened |
| Elastomers | EPDM, Nitrile optional PTFE encap. |
| Pumps suitable for | Up to 50 C |
| Modified versions with special bushes | Up to 100 C |

CONNECTIONS

| | |
|----------|---|
| Standard | 1/2" or 3/4" BSP Female |
| Options | 1" in BSP Male, IDF, ILC, RJT, or Tri-Clamp |

DRIVE

Suitable for close coupling to D70, D80 or D90 motors with 'C' face and geared motor units.

Albany Pumps

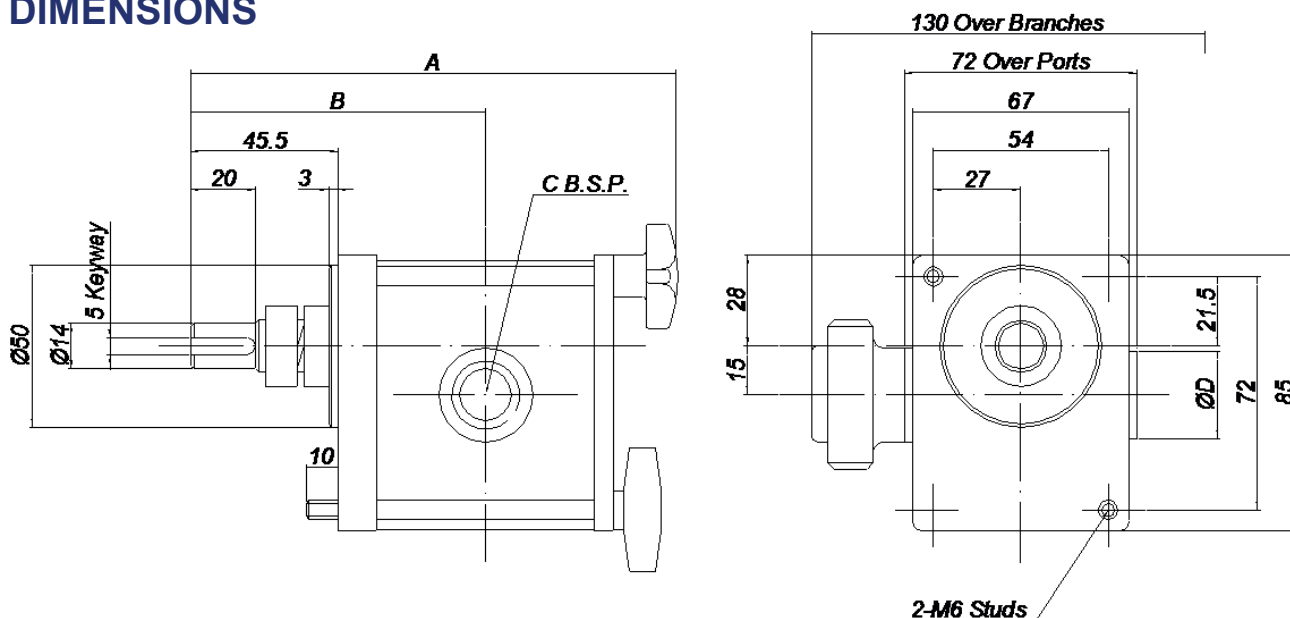
G: J Style: JS 100 range

Fast maintenance and hygienic pumps

CAPACITY / POWER

| Model | rpm | Kw | Litres / Min | | | | | Max cSt. |
|-------|------|------|--------------|-------|-------|-------|-------|----------|
| | | | 0 | 2 | 4 | 6 | 7 bar | |
| JS110 | 720 | 0.18 | 4.90 | 3.90 | 2.90 | 1.90 | 1.40 | 975 |
| | 930 | 0.25 | 6.50 | 5.75 | 4.65 | 3.73 | 3.26 | 750 |
| | 1420 | 0.37 | 9.80 | 8.95 | 8.10 | 7.25 | 6.83 | 550 |
| JS120 | 720 | 0.37 | 8.25 | 7.10 | 5.95 | 4.80 | 4.23 | 975 |
| | 930 | 0.37 | 11.00 | 9.93 | 8.85 | 7.78 | 7.24 | 750 |
| | 1420 | 0.55 | 16.50 | 15.50 | 14.50 | 13.50 | 13.50 | 550 |
| JS130 | 720 | 0.55 | 13.30 | 12.03 | 10.76 | 9.49 | 8.86 | 975 |
| | 930 | 0.55 | 17.70 | 16.47 | 15.24 | 14.01 | 13.40 | 750 |
| | 1420 | 0.75 | 26.60 | 25.44 | 24.28 | 23.12 | 22.54 | 550 |
| JS140 | 720 | 0.75 | 16.50 | 15.05 | 13.60 | 12.15 | 11.43 | 975 |
| | 930 | 1.10 | 21.90 | 20.54 | 19.17 | 17.81 | 17.13 | 750 |
| | 1420 | 1.10 | 33.00 | 31.70 | 30.40 | 29.10 | 28.55 | 550 |

DIMENSIONS



| | A | B | C | D | Kg |
|-------|-----|------|---------|----|-----|
| JS110 | 141 | 86 | 1/2 BSP | 26 | 2.5 |
| JS120 | 151 | 91 | 1/2 BSP | 26 | 2.8 |
| JS130 | 166 | 98.5 | 3/4 BSP | 35 | 3.2 |
| JS140 | 166 | 98.5 | 3/4 BSP | 35 | 3.2 |

Albany Pumps

G: J Style: JS 200 range Fast maintenance and hygienic pumps

MAIN FEATURES

- Quick Strip
- Compact Design
- Bi - Rotational
- High Efficiency
- Self Priming
- Special Gear Profile

APPLICATION

The JS200 series consists of 4 models constructed in Stainless Steel. They are used to handle a wide range of products for bottle filling, dosing, sampling and transfer, in the Food, Chemical and associated industries.

CONSTRUCTION

All components are fully machined to a high standard. Releasing the two hand nuts allows easy dismantling of the three piece housing. The shaft assembly complete with mechanical seal can be withdrawn through the front cover.

MATERIALS

| | |
|------------|-----------------------|
| Body | ANSI 316 |
| End Covers | ANSI 316 |
| Shafts | ANSI 316 |
| O – Rings | Viton |
| Bearings | Glass filled PTFE |
| Gears | Non galling Stainless |



OPTIONS

| | |
|---------------------------------------|--|
| Shaft sealing | Mechanical seal with viton sealing, stainless and carbon faces. Tungsten carbide faces optional. |
| Shafts ANSI 440 | Hardened |
| Elastomers | EPDM, Nitrile, PTFE encap. |
| Pumps suitable for | Up to 50°C |
| Modified versions with special bushes | Up to 100°C |

CONNECTIONS

| | |
|----------|---------------------------------|
| Standard | 1 1/2" BSP Female |
| Options | 1 1/2" BSP Male, Tri-Clamp, RJT |

DRIVE

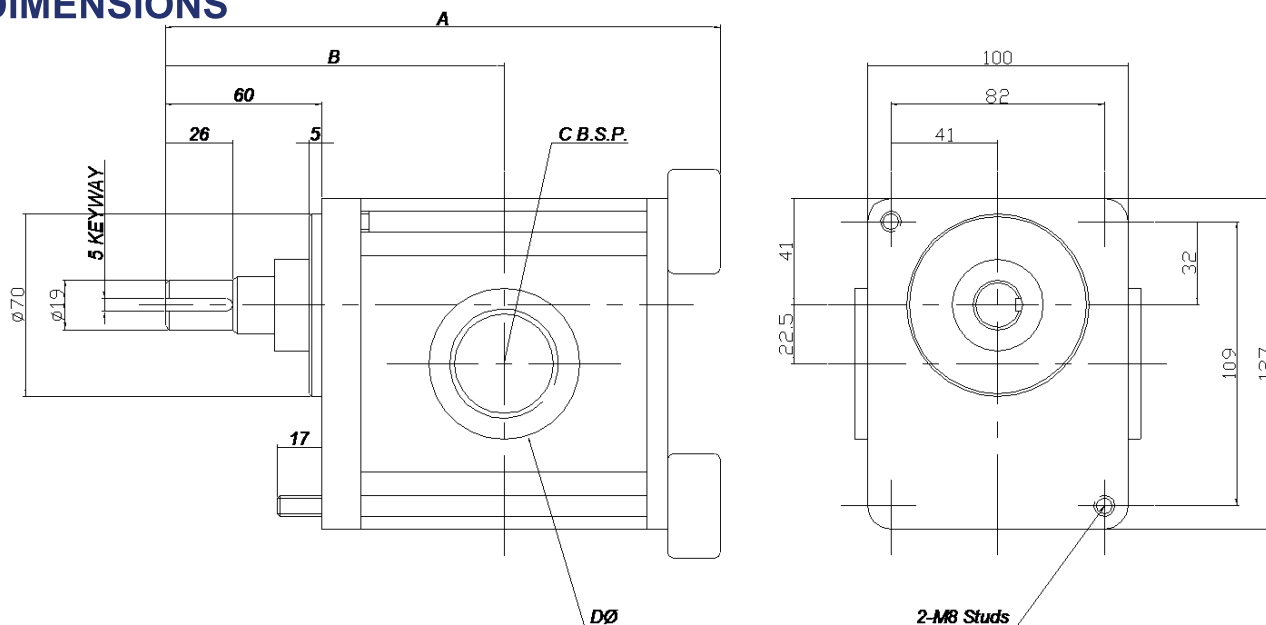
Suitable for close coupling to D90, D100 or D112 motors with 'C' face and geared motor units.

G: J Style: JS 200 range Fast maintenance and hygienic pumps

CAPACITY / POWER

| Model | rpm | Kw | Litres / Min | | | | | Max cSt. |
|-------|------|------|--------------|------|------|------|-------|----------|
| | | | 0 | 2 | 4 | 6 | 7 bar | |
| JS210 | 720 | 0.75 | 18.5 | 17.0 | 16.0 | 14.5 | 13.5 | 975 |
| | 930 | 1.1 | 25.0 | 23.5 | 22.0 | 20.0 | 18.5 | 750 |
| | 1420 | 1.5 | 37.5 | 34.0 | 32.0 | 29.0 | 26.5 | 550 |
| JS220 | 720 | 1.1 | 26.0 | 24.0 | 22.0 | 20.5 | 18.5 | 975 |
| | 930 | 1.5 | 35.0 | 32.5 | 30.0 | 28.0 | 25.0 | 750 |
| | 1420 | 2.2 | 60.0 | 48.0 | 44.0 | 40.5 | 37.0 | 550 |
| JS230 | 720 | 1.1 | 37.5 | 34.0 | 32.0 | 29.0 | 26.5 | 975 |
| | 930 | 1.5 | 50.0 | 46.5 | 44.0 | 40.0 | 35.6 | 750 |
| | 1420 | 2.2 | 85.5 | 68.0 | 64.0 | 58.0 | 53.0 | 550 |
| JS240 | 720 | 1.5 | 45.5 | 41.0 | 38.5 | 35.0 | 32.0 | 975 |
| | 930 | 2.2 | 60.0 | 56.0 | 53.0 | 48.0 | 44.0 | 750 |
| | 1420 | 3.0 | 90.0 | 82.0 | 77.0 | 70.0 | 64.0 | 550 |

DIMENSIONS



| | A | B | C | D | Kg |
|-------|-----|-----|-----------|----|-----|
| JS210 | 183 | 115 | 1 1/2 BSP | 58 | 7.6 |
| JS220 | 183 | 115 | 1 1/2 BSP | 58 | 7.6 |
| JS230 | 213 | 130 | 1 1/2 BSP | 58 | 9.8 |
| JS240 | 213 | 130 | 1 1/2 BSP | 58 | 9.8 |