

**G: Gear type pump range**

**G: H Style:**



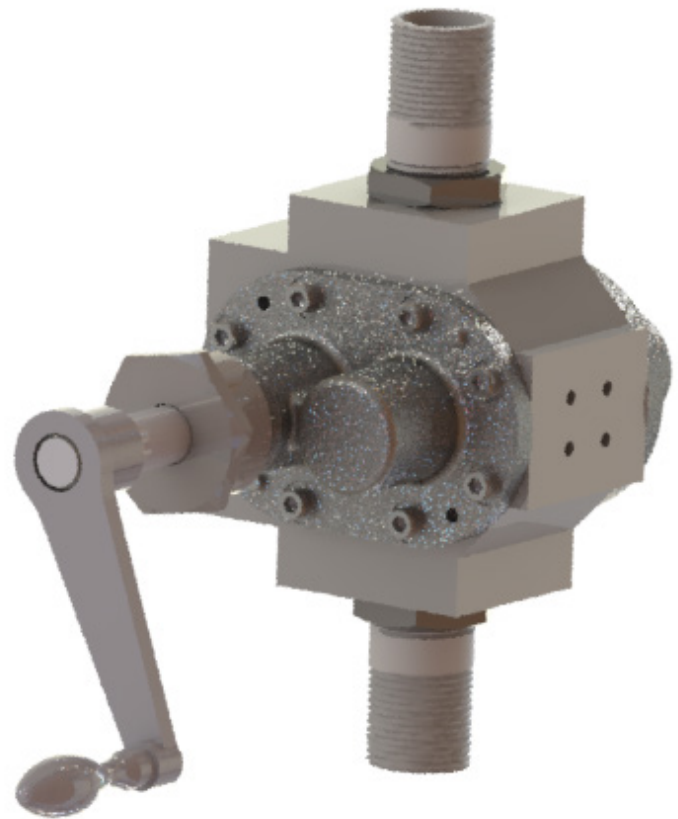
Materials: **CI**

**Hand operated pumps**

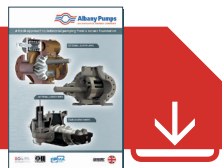
The GH range comes with a handle fitted to allow for hand operation.

This range is mainly used for light applications such as barrel emptying and vehicle refuelling in remote areas.

These hand operated, heavy-duty pumps are ideal for utility and emergency uses and in places where there is no supply of electricity.



Albany's 24-page brochure is available as a download at [www.albany-pumps.co.uk](http://www.albany-pumps.co.uk)



Maximum working pressure <b>2 barg</b>	Pump size range <b>1/2" - 1 1/2"</b>	Maximum temperature <b>80°C</b>	Flow rate <b>approx 10-20 L/min</b>
--	--------------------------------------	---------------------------------	-------------------------------------

AL Aluminium | CS Cast Steel | CI Cast Iron | GM Gunmetal | HY Hastelloy | NR Ni-resist | NY Nylon | PP Polypropylene | SD Super Duplex | SS Stainless Steel

General and Chemical | Bitumen | Fire | Dispenser Machines | Food Industry | Lubrication | Marine | Oil & Gas | Refrigeration | Sugar

[www.albany-pumps.co.uk](http://www.albany-pumps.co.uk) +44 (0) 1594 842 275

**Head Office and Manufacturing Centre**

Albany Engineering Company Ltd  
Church Road, Lydney  
Gloucestershire, GL15 5EQ  
United Kingdom

t: +44 (0) 1594 842 275  
Head Office Option 1

e: [sales@albany-pumps.co.uk](mailto:sales@albany-pumps.co.uk)