

G: Gear type pump range

G: N Style:



Materials: CI

Economy – heating and ventilation pumps

The GN range is a competitively priced pump available on VERY short lead times. Offering an economical solution, this range features a close coupled design and is often face mounted. The pump also offers alternative mounting options. Various layouts include foot or flange mounted, skirt mounted direct to a motor. The GN range is also made as a Duplex pump set with a filter as one unit, often used for pumping generator fuel in buildings.



Albany's 24-page brochure is available as a download at www.albany-pumps.co.uk



Maximum working pressure 10 barg	Pump size range 1/4" - 2 1/2"	Maximum temperature 85°C (95°C - 56 frames)	Flow rate 3.5-300 L/min
---	-------------------------------	--	--------------------------------

AL Aluminium | CS Cast Steel | CI Cast Iron | GM Gunmetal | HY Hastelloy | NR Ni-resist | NY Nylon | PP Polypropylene | SD Super Duplex | SS Stainless Steel
 General and Chemical Bitumen Fire Dispenser Machines Food Industry Lubrication Marine Oil & Gas Refrigeration Sugar

www.albany-pumps.co.uk +44 (0) 1594 842 275

Head Office and Manufacturing Centre

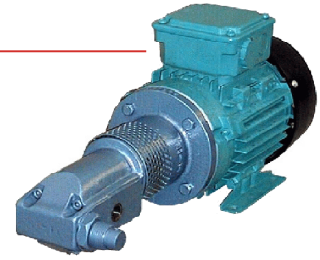
Albany Engineering Company Ltd
Church Road, Lydney
Gloucestershire, GL15 5EQ
United Kingdom

t: +44 (0) 1594 842 275
Head Office Option 1

e: sales@albany-pumps.co.uk

Albany Pumps

G: N Style: 25 and 40 Series Economy and heating and ventilation pump



Compact and robust gear pumps with cast iron casings, steel rotors and shafts. Adjustable internal relief valves are available on all pumps.

FEATURES

- Self-priming
- Constant, non-pulsating flow
- Rotational speeds between 100 rev/min and 1725 rev/min
- Packed adjustable gland, lip seal or mechanical seal
- Choice of bearings
- Motor drive or bare drive shaft
- Electric or air motor drive for normal, extreme or hazardous conditions
- Individually tested

PRESSURE, FLOW & SUCTION

25 and 40 Series gear pumps can produce pressures up to 10 bar depending on available power supply (kW) and liquid. Powers listed in performance tables cover relief valve pattern pumps with discharge pressures up to that stated.

The rate of flow is proportional to the running speed. Suction lift will vary according to the shaft speed, viscosity and the vapour pressure.

TEMPERATURE

Running at recommended speeds standard pumps can handle liquids at temperatures from 0°C – 85°C. Special pumps are available for liquids at extreme temperatures.

ROTORS

25 and 40 Series pumps are fitted with spur gear rotors.

MOUNTING

For options and type references see dimension drawings.

ROTATION

Standard rotation is clockwise, looking from the drive shaft end of the pump. This direction of rotation will be supplied unless otherwise requested.

APPLICATIONS

Machine tools, sprayers, packaging machinery, bottle washing, de-icing, damp proofing, timber treatment, oil and solvent re-cycling, fuel oil systems, pressure testing, processing, de-greasing, general circulation, lubrication and transfer duties.

LIQUIDS HANDLED

Fuel oils, coolants, lubricants, solvents, bitumen, liquid wax, molasses, cooking oil, glue, varnish, detergents, anti-freeze, insecticides, sodium hydroxide, paints etc.

VISCOSITY

25 and 40 Series gear pumps are individually tested on oil. The performance details shown are based on these tests at the viscosities stated. Viscosity will rise as temperature falls. Viscous liquids will cavitate at high running speeds. Cavitation can be prevented by heating liquids to reduce viscosity, or pumping at low speeds or both.

RELIEF VALVES

Relief valves are pre-set to protect the motor from overload. They are not suitable for use as control valves. The relief valve can be supplied for external relief if needed.

SEALING

Lip seals are standard on all type F models. Packed glands are standard on all type P models with mechanical seals as an option. Nitrile mechanical seals are standard on type O models. Viton mechanical seals are an option.

SUCTION CONDITIONS

Pumps are suitable for suction lifts up to 3m. However, it is advisable for lifts over 2m, long suction runs and suction losses over 0.4 bar to contact Albany sales for advice.

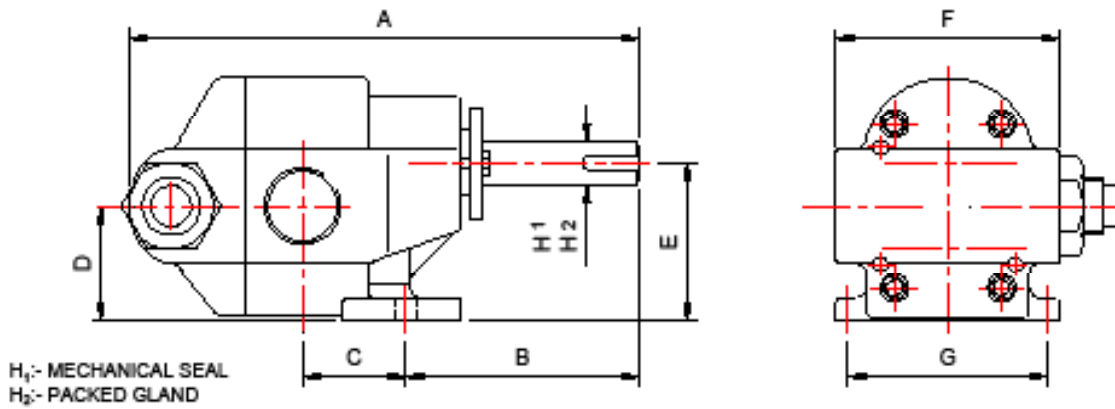
NOTE: Suction head and static discharge head on lip seal models must not exceed 0.34 barg.

Albany Pumps

G: N Style: 25 Series

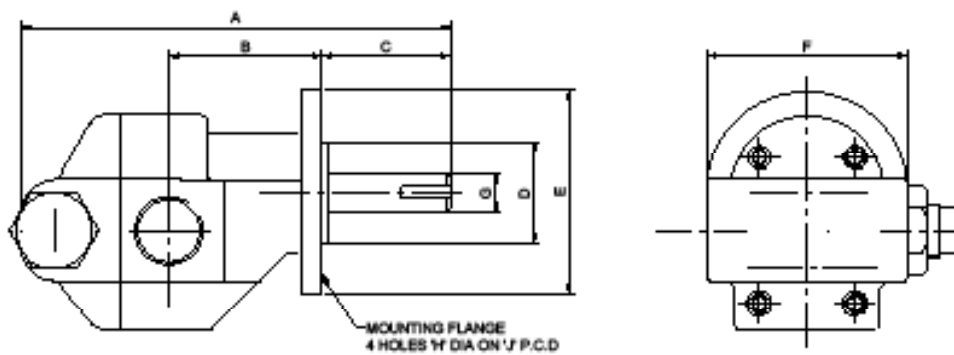
Economy – heating and ventilation pump

MODEL TYPE 'P' 25 pedestal mounting, available with: PACKED GLAND or MECHANICAL SEAL



Model 'P'	mm										Branch BSP female	WEIGHT kg
	A	B	C	D	E	F	G	H ₁	H ₂			
25375	134	89	14	38	51	60	67	10	13	1/4"	2.2	
25750	142	88	18	38	51	60	67	10	13	1/2"	2.5	
25150	161	88	19	38	51	60	67	10	13	1/2"	3.0	
25200	178	88	19	38	51	60	67	10	13	1/2"	3.4	

MODEL TYPE 'F' 25 flange mounting with: LIP SEAL

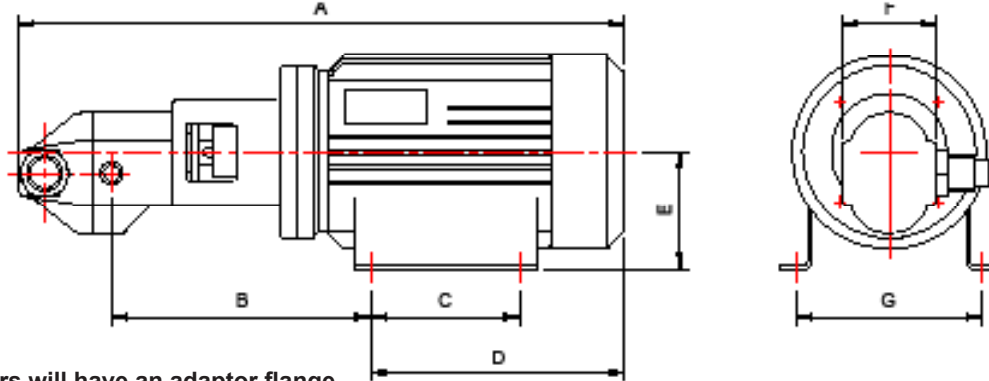


MODEL 'F'	mm										MOUNTING FLANGE	BRANCH BSP female	WEIGHT kg
	A	B	C	D	E	F	G	H	J				
25375	118	30	32	51	102	60	14	9	82.5	1/4"	2.2		
25750	128	30	36	51	102	60	14	9	82.5	1/2"	2.5		
25150	145	30	36	51	102	60	14	9	82.5	1/2"	3.0		
25200	157	30	36	51	102	60	14	9	82.5	1/2"	3.4		

Albany Pumps

G: N Style: 25 Series Economy – heating and ventilation pump

MODEL TYPE 'O' 25 motorised available with: MECHANICAL SEAL



Note: D90 motors will have an adaptor flange.

MODEL 'O'	MOTOR	mm								BRANCH BSP female	WEIGHT kg		
		A	B	C		D	E	F	G				
25375	D71C	398	166	90		176	71	60	112	1/4"	9.5		
25750	D71C	407	172	90		176	71	60	112	1/2"	10		
25150	D71C	427	172	90		176	71	60	112	1/2"	10.5		
25200	D71C	439	172	90		176	71	60	112	1/2"	11.0		
25375	D80C	432	171	100		205	80	60	125	1/4"	12.0		
25750	D80C	441	177	100		205	80	60	125	1/2"	12.5		
25150	D80C	461	177	100		205	80	60	125	1/2"	13		
25200	D80C	473	177	100		205	80	60	125	1/2"	13.5		
25150	D90S	D90L	420	183	100	125	214	90	60	140	1/2"	16.5	18.5
25200	D90S	D90L	432	183	100	125	214	90	60	140	1/2"	17.0	19.0

Performance

Model	Viscosity in cSt	960 rev/min						
		Capacity in L/min at these pressures (barg)				kW at these pressures (barg)		
		0	3.5	7	10	3.5	7	10
25375	35	3.5	3.2	2.9	2.6	0.12	0.12	0.18
	125	3.5	3.3	3.1	2.9	0.12	0.12	0.18
	1250	3.5	3.4	3.3	3.2	0.25	0.25	0.37
25750	35	7.1	6.5	5.9	5.3	0.18	0.25	0.37
	125	7.1	6.9	6.7	6.5	0.18	0.37	0.55
	1250	7.1	6.8	6.7	6.6	0.37	0.55	0.55
25150	35	14.1	13.0	12.4	11.8	0.25	0.37	0.55
	125	14.1	13.9	13.7	13.5	0.37	0.55	0.75
	1250	14.1	13.6	13.5	13.4	0.75	1.1	1.1
25200	35	18.8	18.1	17.4	16.7	0.25	0.55	0.75
	125	18.8	18.6	18.4	18.2	0.37	0.75	1.1
	1250	18.8	18.6	18.4	18.2	0.75	1.1	1.1

Model	Viscosity in cSt	1420 rev/min						
		Capacity in L/min at these pressures (barg)				kW at these pressures (barg)		
		0	3.5	7	10	3.5	7	10
25375	4	5.1	4.8	4.5	-	0.12	0.18	-
	125	5.1	4.9	4.7	4.5	0.18	0.18	0.25
	1250	5.0	4.9	4.8	4.7	0.37	0.37	0.37
25750	4	10.2	10.0	9.8	-	0.25	0.55	-
	125	10.2	10.1	10.0	9.9	0.37	0.55	0.75
	1250	10.0	10.0	9.9	9.8	0.55	0.75	0.75
25150	4	20.8	20.4	-	-	0.55	-	-
	125	20.8	20.5	20.2	19.9	0.55	1.1	1.5
	1250	19.8	19.8	19.7	19.6	1.1	1.5	1.5
25200	4	27.7	27.3	-	-	0.55	-	-
	125	27.7	27.5	27.3	27.1	0.55	1.1	1.5
	1250	25.8	25.8	25.7	25.6	1.1	1.5	1.5

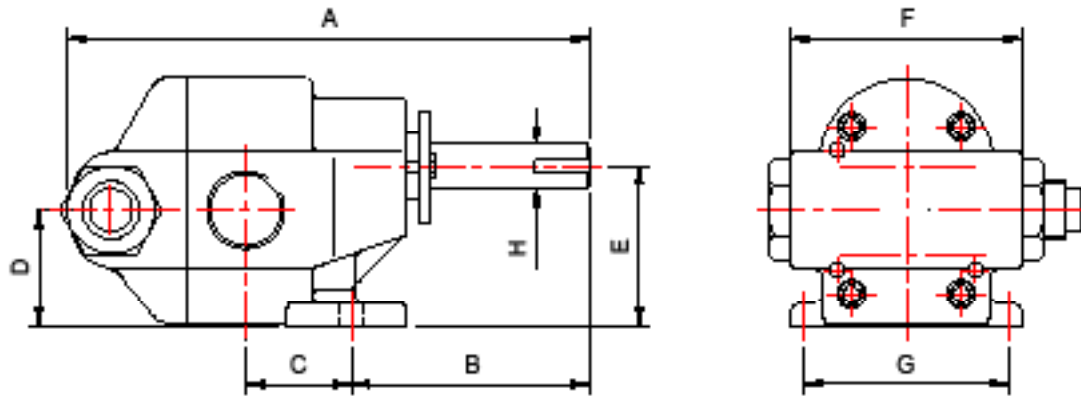
Pumps for liquids with viscosities less than 4 centistokes and over 750 centistokes must be referred to Albany sales for selection.

Albany Pumps

G: N Style: 40 Series

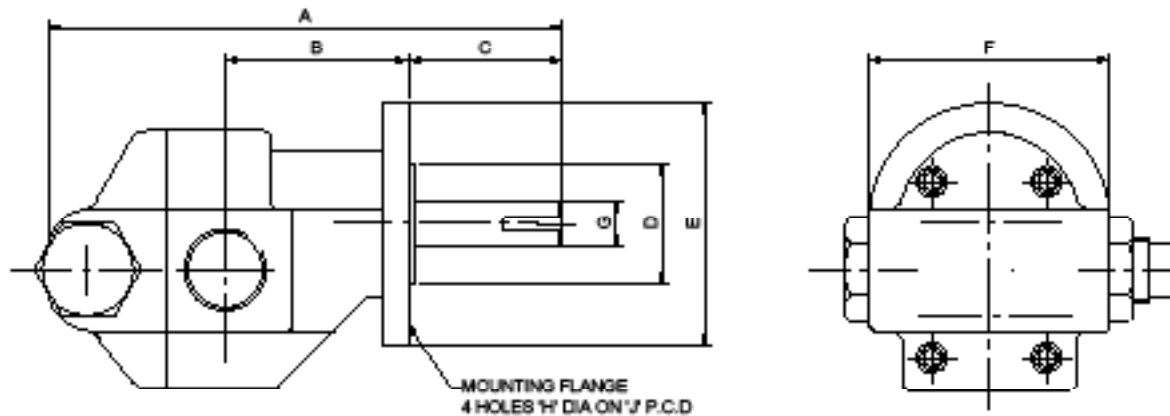
Economy – heating and ventilation pump

MODEL TYPE 'P' 40 pedestal mounting, available with: PACKED GLAND or MECHANICAL SEAL



Model 'P'	mm								Branch BSP female	WEIGHT kg
	A	B	C	D	E	F	G	H		
40130	214	102	34	51	70	100	76	19	1"	6.4
40175	225	101	34	51	70	100	76	19	1"	7.2
40275	251	101	38	51	70	100	76	19	1.1/4"	8.9

MODEL TYPE 'F' 40 flange mounting with: LIP SEAL



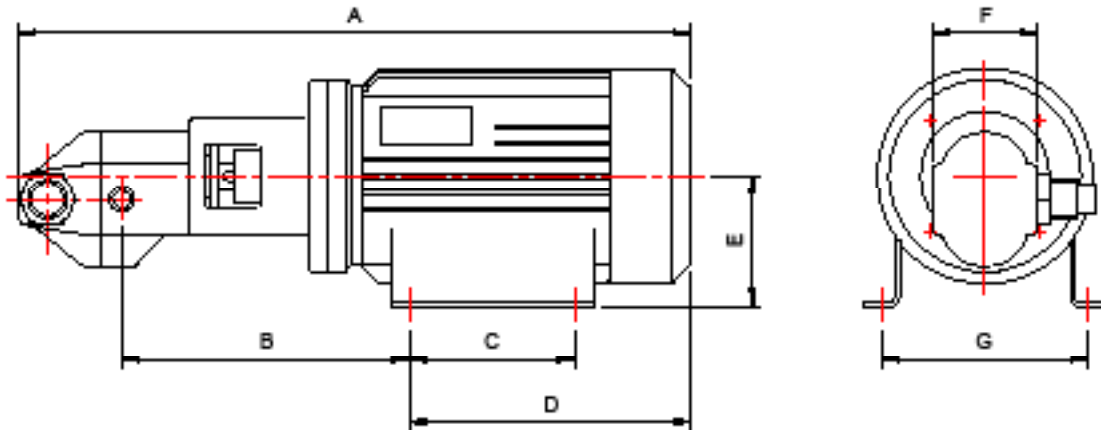
MODEL 'F'	mm								MOUNTING FLANGE		BRANCH BSP female	WEIGHT kg
	A	B	C	D	E	F	G	H	J			
40130	214	63	76	51	102	100	19	7	76	1"	6	
40175	225	62	76	51	102	100	19	7	76	1"	6.8	
40275	251	62	80	51	102	100	19	7	76	1.1/4"	8.5	

Albany Pumps

G: N Style: 40 Series

Economy – heating and ventilation pump

MODEL TYPE 'O' 40 motorised available with: MECHANICAL SEAL



Note: D100 & D112 motors will have an adaptor flange.

MODEL 'O'	MOTOR		mm								BRANCH BSP female	WEIGHT kg	
			A	B	C		D	E	F	G			
40130	D90SC	D90LC	514	223	100	125	216	90	100	140	1"	21.7	23.7
40175	D90SC	D90LC	525	223	100	125	216	90	100	140	1"	22.5	24.5
40275	D90SC	D90LC	551	227	100	125	216	90	100	140	1.1/4"	24.2	26.2
40130	D100C		555	230	140		245	100	100	160	1"	33	
40175	D100C		566	230	140		245	100	100	160	1"	33.8	
40275	D100C		592	234	140		245	100	100	160	1.1/4"	35.5	
40130	D112C		561	237	140		248	112	100	190	1"	41	
40175	D112C		572	237	140		248	112	100	190	1"	41.8	
40275	D112C		598	241	140		248	112	100	190	1.1/4"	43.5	

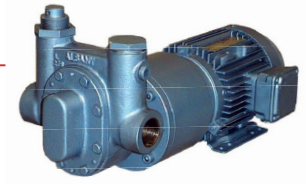
Performance

960 rev/min									1420 rev/min								
Model	Viscosity in cst	Capacity in L/min at these pressures (barg)				kW at these pressures (barg)			Model	Viscosity in cst	Capacity in L/min at these pressures (barg)				kW at these pressures (barg)		
		0	3.5	7	10	3.5	7	10			0	3.5	7	10	3.5	7	10
40130	35	31	28	25	22	0.55	0.75	1.1	40130	4	46	43	40	-	1.1	1.5	-
	125	31	30	29	28	0.75	1.1	1.5		125	46	45	44	43	1.1	1.5	2.2
	1250	31	30.5	30	29.5	1.1	1.5	2.2		750	46	45.5	45	44.5	2.2	3.0	3.0
40175	35	41	37	33	29	0.75	1.1	1.1	40175	4	61	57	53	-	1.1	2.2	-
	125	41	40	39	38	0.75	1.5	1.5		125	61	60	59	58	1.5	2.2	3.0
	1250	41	40.5	40	39.5	1.5	2.2	2.2		750	61	60.5	60	59.5	2.2	3.0	3.0
40275	35	66	61	56	51	1.1	1.5	1.5	40275	4	96	90	-	-	1.5	-	-
	125	66	65	63	62	1.1	2.2	2.2		125	96	95	94	93	1.5	3.0	4.0
	1250	66	65.5	-	-	2.2	-	-		750	96	95.5	95	-	3.0	4.0	-

Pumps for liquids with viscosities less than 4 centistokes and over 750 centistokes must be referred to Albany sales for selection.

Albany Pumps

G: N Style: 56 Series Economy – heating and ventilation pump



Compact and robust gear pumps with cast iron casings, steel rotors and shafts. Adjustable internal relief valves are available on all pumps.

FEATURES

- Self-priming
- Constant, non-pulsating flow
- Rotational speeds between 100 rev/min and 1725 rev/min
- Packed adjustable gland, lip seal or mechanical seal
- Choice of bearings
- Motor drive or bare drive shaft
- Electric or air motor drive for normal, extreme or hazardous conditions
- Individually tested

PRESSURE, FLOW & SUCTION

56 Series gear pumps can produce pressures up to 10 bar depending on available power supply (kW) and liquid. Powers listed in performance tables cover relief valve pattern pumps with discharge pressures up to that stated.

The rate of flow is proportional to the running speed.

Suction lift will vary according to the shaft speed, viscosity and the vapour pressure.

TEMPERATURE

Running at recommended speeds standard pumps can handle liquids at temperatures from 0°C – 95°C. Special pumps are available for liquids at extreme temperatures.

ROTORS

All 56 series pumps can have spur or double helical rotors (flowrate from a double helical rotor pump will be slightly lower than that from a spur rotor pump).

SOME OPTIONS

Many varieties of 56 series pumps can be supplied from existing Albany designs including pumps for extreme temperatures and pressures.

- Heated Pumps
- Vertical Models
- Pumps in Gunmetal, steel and stainless steel.

MOUNTING

For options and type references see dimension drawings.

APPLICATIONS

Machine tools, sprayers, packaging machinery, bottle washing, de-icing, damp proofing, timber treatment, oil and solvent re-cycling, fuel oil systems, pressure testing, processing, de-greasing, general circulation, lubrication and transfer duties.

LIQUIDS HANDLED

Fuel oils, coolants, lubricants, solvents, bitumen, liquid wax, molasses, cooking oil, glue, varnish, detergents, anti-freeze, insecticides, sodium hydroxide, paints etc.

VISCOSITY

56 Series gear pumps are individually tested on oil. The performance details shown are based on these tests at the viscosities stated. Viscosity will rise as temperature falls. Viscous liquids will cavitate at high running speeds. Cavitation can be prevented by heating liquids to reduce viscosity, or pumping at low speeds, or both.

RELIEF VALVES

Relief valves are pre-set to protect the motor from overload. They are not suitable for use as control valves. The relief valve can be supplied for external relief if needed.

SEALING

Lip seals are standard on all type F models. Packed glands are standard on all type P models. Mechanical seals are available on type P models

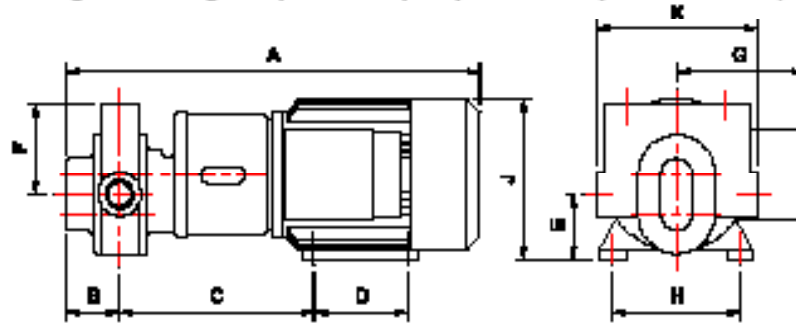
NOTE: Suction head and static discharge head on lip seal models must not exceed 0.34 barg.

Albany Pumps

G: N Style: 56 Series

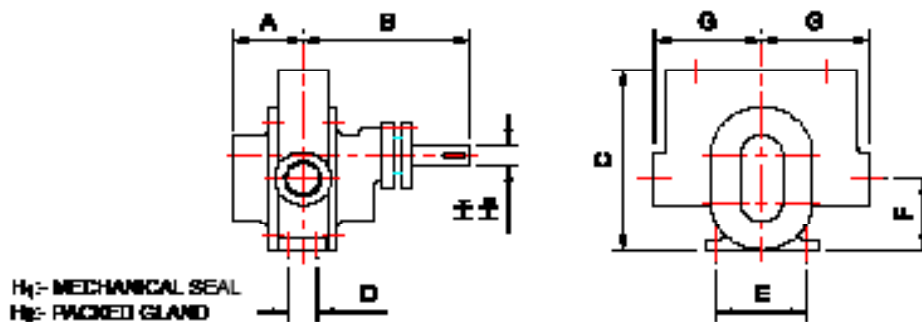
Economy – heating and ventilation pump

MODEL TYPE 'F' 56 flange mounting complete with pump/motor adaptor and motor, available with: LIP SEAL



MODEL 'F'	MTR	mm												BRANCH B8P female	WEIGHT Kg			
		A		B		C	D	E	F		G	H	J			K		
		RV	NON RV	RV	NON RV				RV	NON RV						RV	NON RV	
5625	090L	557		79		264	125	62		175	85	154	140	178	242	171	1.14"	38
5625	0100L	609		79		282	140	72		175	85	188	160	204	242	171	1.14"	38
5625	0112M	610		79		288	140	84		175	85	191	190	223	242	171	1.14"	44
5625	0132M	735		79		133	114	124		175	85	214	216	285	242	171	1.14"	94
5635	090L	583		92		277	125	62		175	85	154	140	178	242	152	1.12"	44
5635	0100L	635		92		295	140	72		175	85	188	160	204	242	152	1.12"	44
5635	0112M	636		92		302	140	84		175	85	191	190	223	242	152	1.12"	48
5635	0132M	821		92		146	114	124		175	85	214	216	285	242	152	1.12"	98
5645	0112M	843	667	284	108	318	140	84		85		191	190	223	165	2.12"	61	
5645	0132M	1028	852	284	108	162	114	124		85		214	216	285	165	2.12"	111	
5645	0160L	1110	934	284	108	162	114	124		85		273	216	317	165	2.12"	161	

MODEL TYPE 'P' 56 pedestal mounting, available with: PACKED GLAND or MECHANICAL SEAL

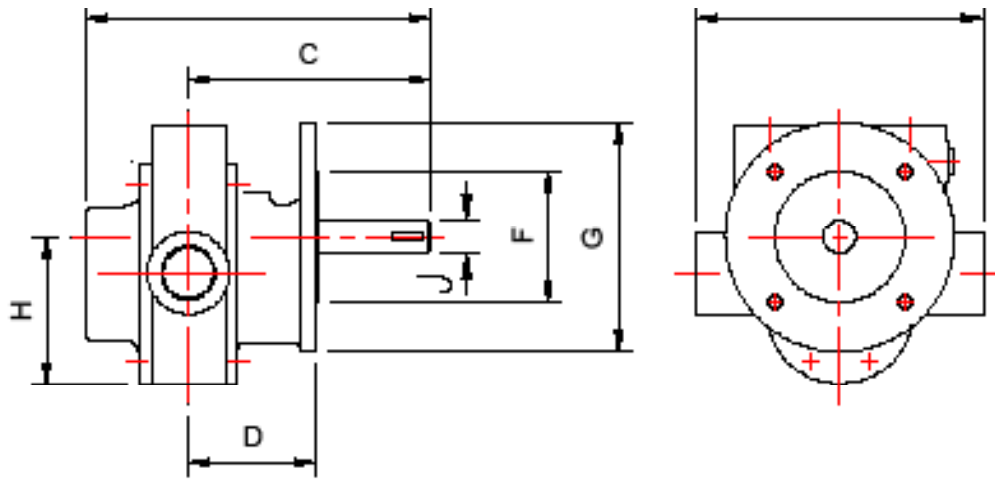


MODEL 'P'	mm										BRANCH B8P female	WEIGHT Kg			
	A		B	C		D	E	F	G				H1	H2	
	RV	NON RV		RV	NON RV				RV	NON RV					
5625		79	187	260	171	32	102	86	121	85.5	19	254	1.14"	17	
5625		92	208	260	171	38	102	86	121	76	19	254	1.12"	21	
5645	258	108	216		171		76	124	86		82.5	19	254	2.12"	34

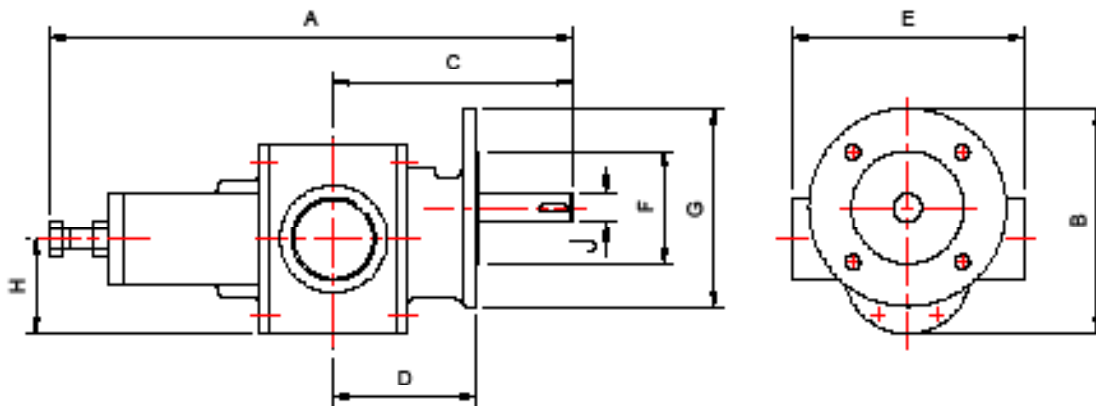
Albany Pumps

G: N Style: 56 Series

Economy – heating and ventilation pump



MODEL 'F'	mm												BRANCH BSP female	WEIGHT Kg	
	A		B		C	D	E		F	G	H	J		RV	NON RV
	RV	NON RV	RV	NON RV			RV	NON RV							
5675	267		263	283	117	36	222	172	102	178	114	25.4	1 1/2"	17	13
5685	292		263	283	209	111	241	152	102	178	114	25.4	1 1/2"	21	17



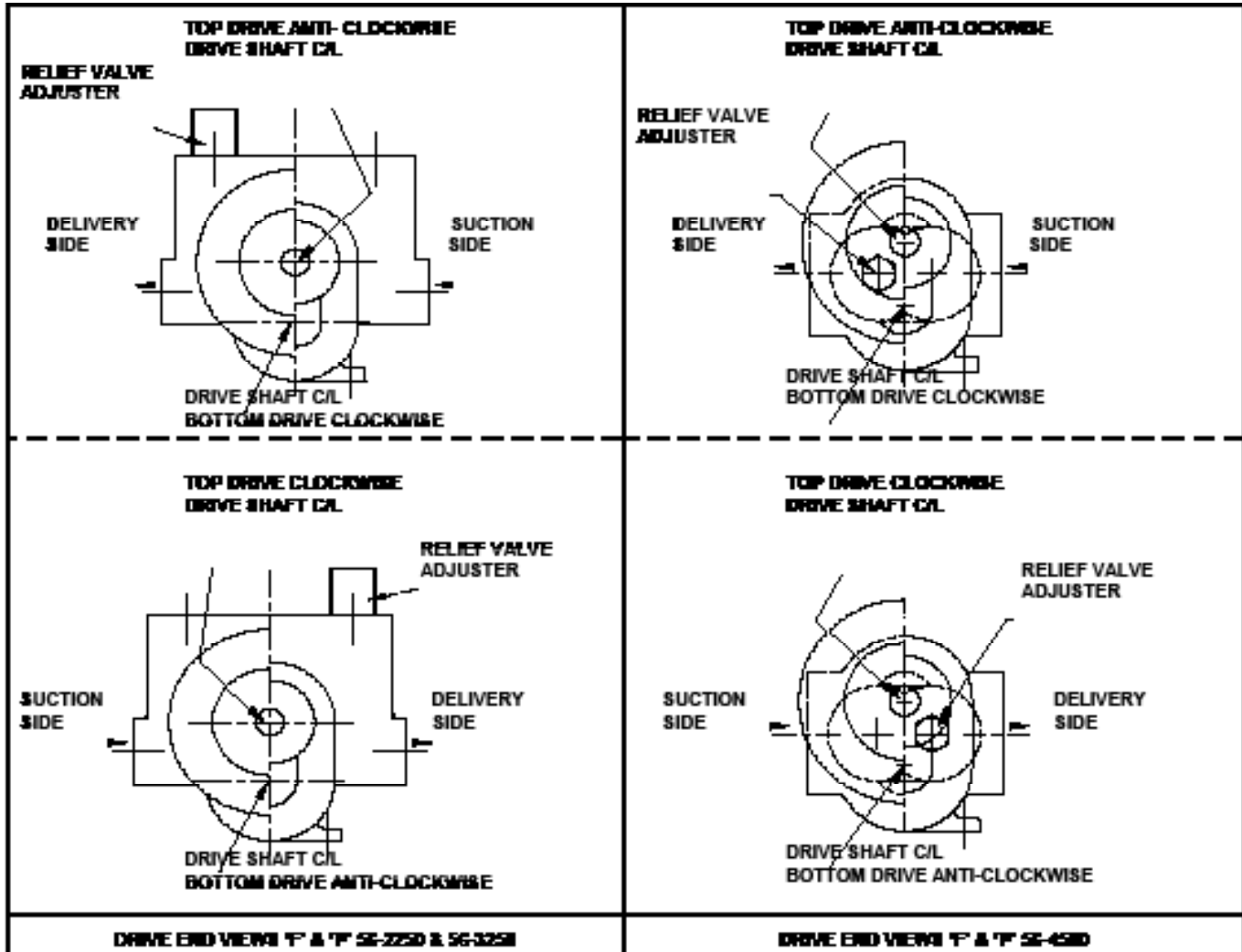
MODEL 'F'	mm												BRANCH BSP female	WEIGHT Kg	
	A		B		C	D	E		F	G	H	J		RV	NON RV
	RV	NON RV	RV	NON RV			RV	NON RV							
5680	437	324	203		216	127	165		102	178	114	25.4	2 1/4"	24	28

Albany Pumps

G: N Style: 56 Series

Economy – heating and ventilation pump

Rotation and flow



Performance

960 rev/min								1420 rev/min									
Model	Viscosity in cSt	Capacity in L/min at these pressures (barg)				kW at these pressures (barg)			Model	Viscosity in cSt	Capacity in L/min at these pressures (barg)				kW at these pressures (barg)		
		0	3.5	7	10	3.5	7	10			0	3.5	7	10	3.5	7	10
68226	4	180	180	180	-	1.5	2.2	-	68226 with DH 100074	4	184	187	188	-	3.8	4.8	-
	120	182	187	187	191	4.4	3.8	4.8		120	184	188	192	196	3.8	4.8	4.5
	1200	182	189	187	191	2.2	3.8	4.8		1200	184	189	190	192	4.8	4.5	4.5
68227	4	140	141	-	-	2.2	-	-	68226 with DH 100074	4	222	211	208	-	4.8	4.5	-
	120	140	142	138	138	3.8	4.8	5.4		120	222	213	204	194	4.8	4.5	7.5
	1200	200	144	140	138	3.8	4.8	5.4		1200	222	216	218	204	4.5	7.5	11
68228	4	200	196	-	-	2.2	-	-	68226 with DH 100074	4	200	204	-	-	4.8	-	-
	120	200	196	194	192	3.8	4.5	7.4		120	200	204	204	212	4.8	7.5	11
	1200	200	200	194	190	5.4	7.5	7.4		1200	200	200	202	204	7.5	11	15

Pumps for liquids with viscosities less than 4 centistokes and over 1250 centistokes must be referred to Albany Sales for selection. Suitable for suction lift up to 3M