

G: Gear type pump range

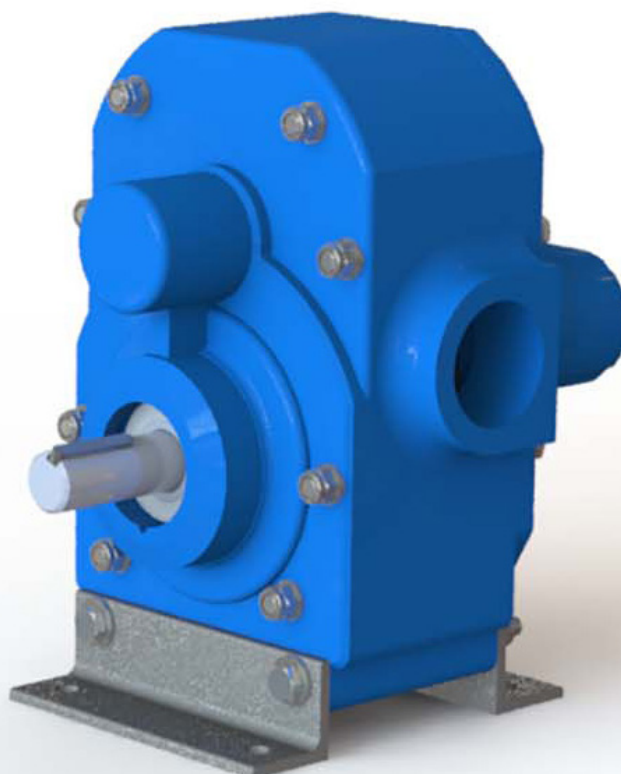
G: P Style:



Materials: NY | PP

Plastic pumps

The GP range is made from reinforced plastic casings. Suitable for pumping maximum temperature of 80°C. The P range pumps are used in the feed industry on acidic fats, molasses in the sugar and in paper industries. Offering an economical solution, these highly versatile pumps are also used for transferring molasses and for spraying a variety of fluids in the farming industry and can be used in chemical industries where polypropylene is often preferred.



Albany's 24-page brochure is available as a download at www.albany-pumps.co.uk



Maximum working pressure 7 barg	Pump size range 1 1/4" - 2"	Maximum temperature 80°C	Flow rate 50-650 L/min
--	------------------------------------	---------------------------------	-------------------------------

AL Aluminium | CS Cast Steel | CI Cast Iron | GM Gunmetal | HY Hastelloy | NR Ni-resist | NY Nylon | PP Polypropylene | SD Super Duplex | SS Stainless Steel
 General and Chemical Bitumen Fire Dispenser Machines Food Industry Lubrication Marine Oil & Gas Refrigeration Sugar

www.albany-pumps.co.uk +44 (0) 1594 842 275

Head Office and Manufacturing Centre

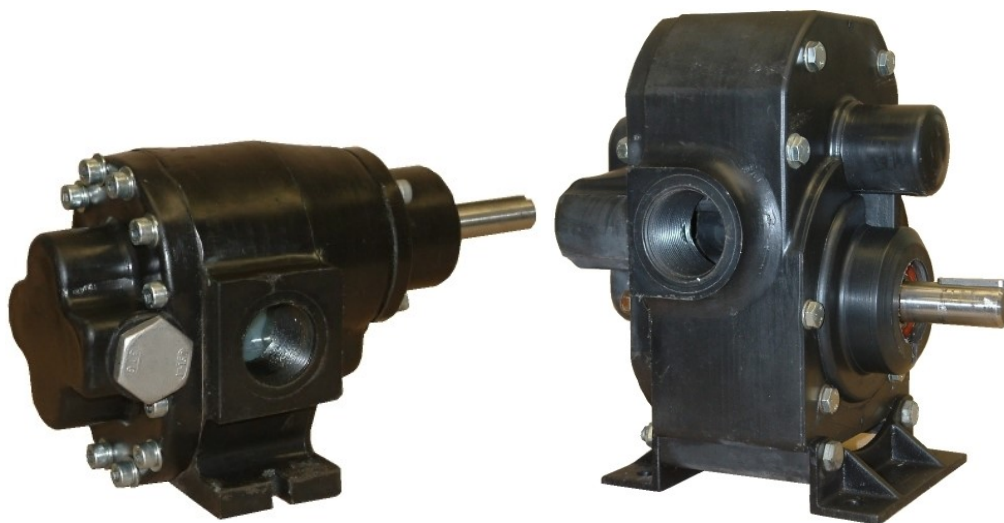
Albany Engineering Company Ltd
Church Road, Lydney
Gloucestershire, GL15 5EQ
United Kingdom

t: +44 (0) 1594 842 275
Head Office Option 1

e: sales@albany-pumps.co.uk

Albany Pumps

G: P Style:



Features

- Composite construction
- NYRIM housing, reinforced with stainless steel
- Excellent corrosion resistance
- Good abrasion resistance
- Lightweight
- Simple design
- Cost effective
- Various options

Applications

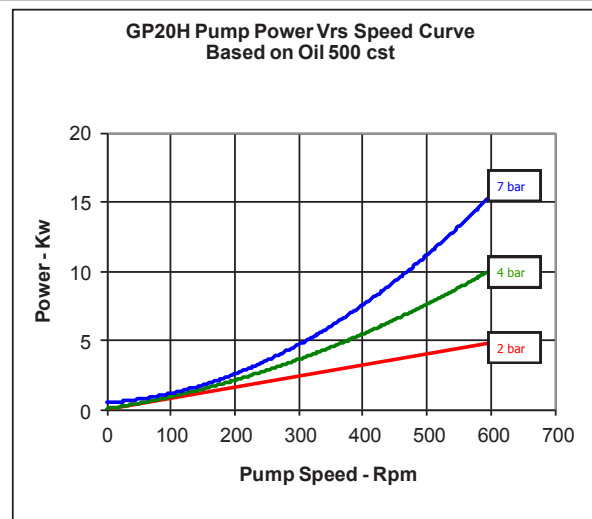
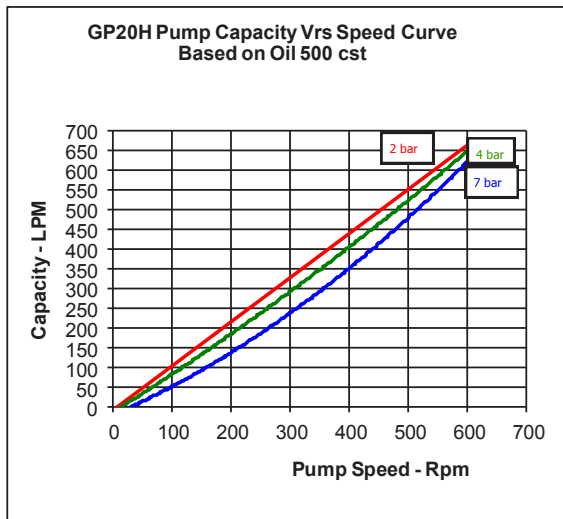
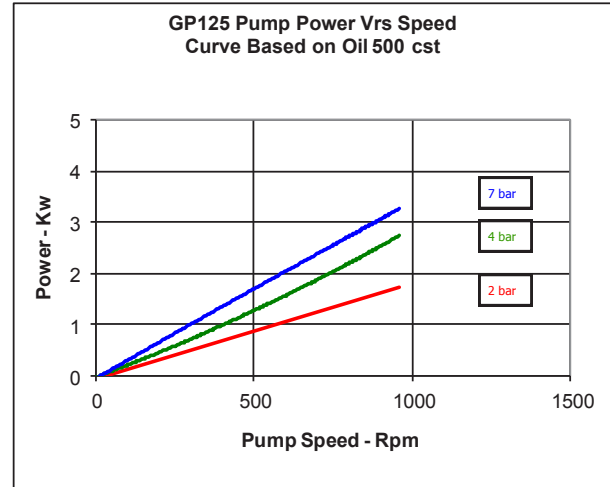
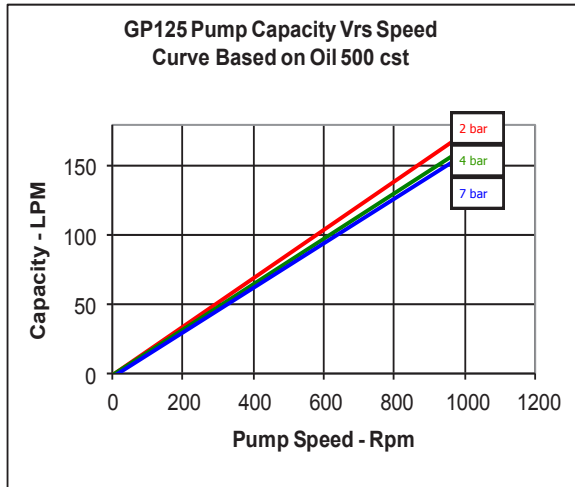
- **Sugar Industry** – molasses, blackstrap, syrup, glucose
- **Paper Industry** – soap sulphate, fatty esters, tallow, tall oil
- **Agriculture** – farm effluent, liquid animal feeds and molasses
- **Mariculture** – fish oils, cod liver oil, halibut liver oil, fish proteins, sperm oil, soft wastes
- **Chemical Industry** – oils, polymers, acid
- **Many others** – flavours, fragrances, chocolate, cocoa butter, edible oils

Maximum working pressure 7 barg	Pump size range 1 1/4" - 2"	Maximum temperature 80°C	Flow rate 50-650 L/min
--	------------------------------------	---------------------------------	-------------------------------

Albany Pumps

G: P Style:

Performance

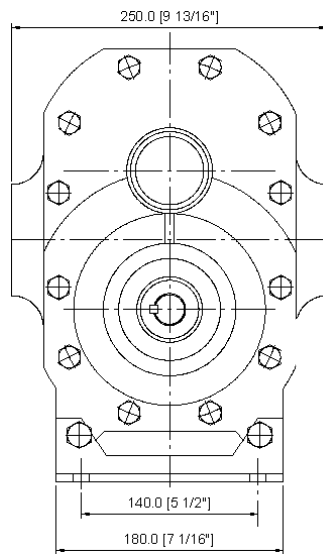


Specifications (standard materials of construction)

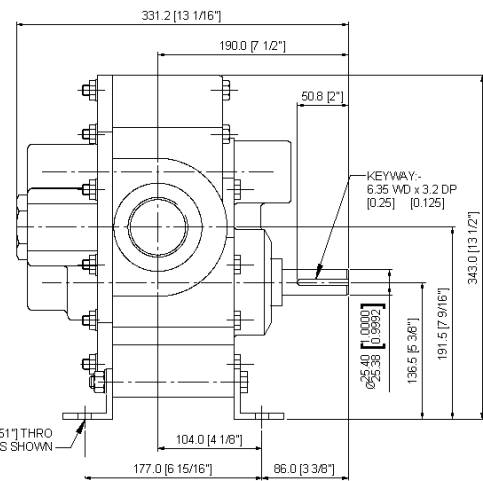
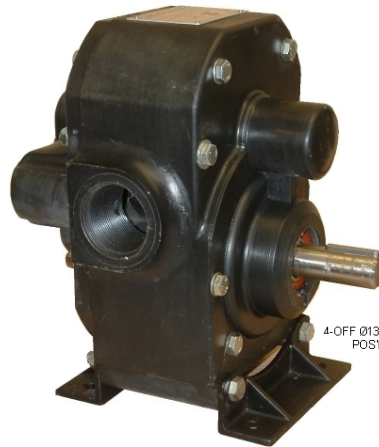
Pump frame size	GP125	GP20H
Housing	Nylon, Nyrin and Polypropylene	Nylon, Nyrin and Polypropylene
Gears	Polyamide 12	Polyamide 12
Shafts	Stainless steel 316	Stainless steel 316
Bearings	Bronze	Bronze
Seals	Lip Seal	Mechanical seal in Viton
Ports	1¼" BSPF	2" BSPF – UK 2" NPT USA
Top Speed RPM	0 – 950	0 – 650
Temp. range	-40 – +80°C	-40 – +80°C

Albany Pumps

G: P Style:

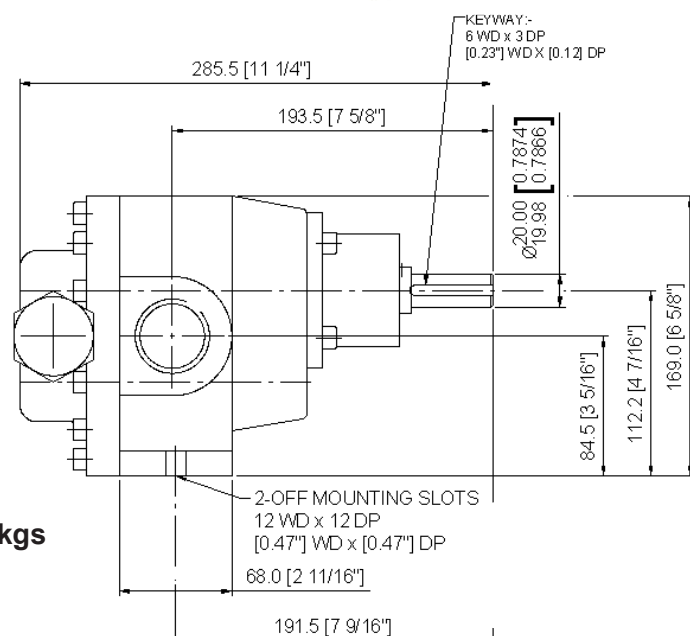
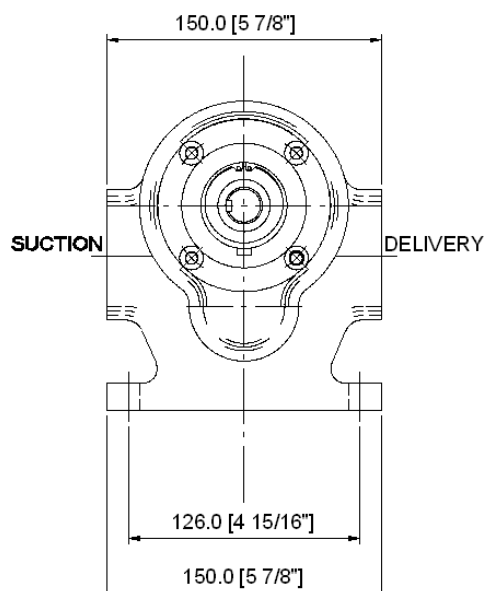


Model GP20H



Shipping Weight 45 lbs – 21 kgs

Model GP125



Shipping Weight 12lbs – 5.5kgs

Albany Pumps

G: P Style:

We support obsolete FF style pumps with spares and a repair service for installed pumps. FF pumps have been replaced by new P style pump.

Design Options

Model GP20H	Bronze, Carbon bearings Various mechanical seal choices Bronze, PTFE & Ertalyte gears
Model GP125	Ertalyte bearings Various mechanical seal materials Choice of lip seal shaft sealing materials

OTHER CORROSION RESISTANT PUMPS FROM ALBANY INCLUDE GUNMETAL, HASTELLOY, STAINLESS STEEL AND SUPER DUPLEX.

SEE OUR GENERAL BROCHURE FOR DETAILS.

