

C: Centrifugal type pump range

C: A Style:



Materials: CI | SS

Centrifugal pumps (customised)

A wide range of centrifugal pumps are offered by Albany. We manufacture both horizontal and vertical pumps. We make column pumps with high temperature capabilities. We manufacture pumps to the original Stothert and Pitt designs, and can offer direct replacements where they are required. This range of pumps does not comply with international standards.



Albany's 24-page brochure is available as a download at www.albany-pumps.co.uk



- AL Aluminium | CS Cast Steel | CI Cast Iron | GM Gunmetal | HY Hastelloy | NR Ni-resist | NY Nylon | PP Polypropylene | SD Super Duplex | SS Stainless Steel
- General and Chemical
 ■ Bitumen
 ■ Fire
 ■ Dispenser Machines
 ■ Food Industry
 ■ Lubrication
 ■ Marine
 ■ Oil & Gas
 ■ Refrigeration
 ■ Sugar

www.albany-pumps.co.uk +44 (0) 1594 842 275

Head Office and Manufacturing Centre

Albany Engineering Company Ltd
Church Road, Lydney
Gloucestershire, GL15 5EQ
United Kingdom
t: +44 (0) 1594 842 275
Head Office Option 1
e: sales@albany-pumps.co.uk



E&OE: Errors and omissions excepted. All content contained herein is subject to change at the Company's discretion without notice.

Albany Pumps

C: A Style centrifugal pumps:

Albany Pumps manufacture and supply the well respected and long established range of centrifugal pumps originally designed and manufactured by Stothert & Pitt.

CONSTRUCTION

Horizontal and Vertical Centrifugal Pumps consist of a rotating element with a bearing bracket and casing which, by use of a spacer coupling, easily removable as a complete module for ease of maintenance without disturbing either the driver or suction and delivery pipework. Tank mounted pumps have intermediate bearings between the headstock and the impeller, the number of which depend on the overall length of the shaft.

DESIGN AVAILABILITY

- Horizontal close-coupled
- Horizontal spacer-coupled
- Vertical close-coupled
- Vertical spacer-coupled
- Tank top mounted with separate discharge pipe
- Tank top mounted with discharge through support column
- Tank top mounted pumps to API 610

SPECIFICATION / MATERIALS

The range of centrifugal pumps are based on the metric design standard BS5257. The pump can be manufactured in various combinations of materials from cast iron, steel and stainless steels. Materials to NACE specification are available.

Horizontal and Vertical Pumps

Close-coupled or spacer-coupled, the pumps can be provided as non-self priming or with vane type primers if required.

Horizontal and Vertical Pumps

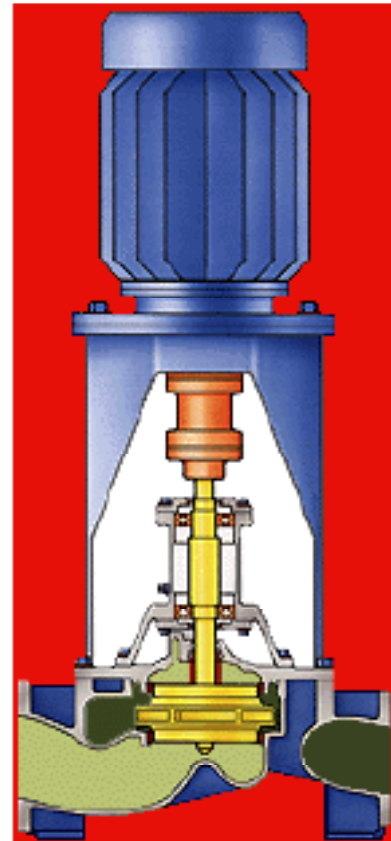
Close-coupled or spacer-coupled, the pumps can be provided as non-self priming or with vane type primers if required.

Separate Discharge Tank Top Pumps

The pump bowl is mounted at the bottom of a support column with a separate discharge pipe connected to the mounting flange. Intermediate bearings are lubricated either by the fluid being pumped or by a separate lubricating system.

Integral Discharge Tank Top Pumps

The pump bowl is mounted at the bottom of a support



column through which flows the discharge fluid. The intermediate bearings are lubricated by the fluid as it passes up the column.

DRIVE ARRANGEMENT

The pumps run at 2 or 4 pole electric motor speeds, either 50Hz or 60Hz and are therefore suitable for direct coupling to the motor. In special cases where emulsification of the liquid is undesirable, 6 or 8 pole speeds can be used provided that only a low head is required.

PRIMING EQUIPMENT

Positive displacement primers are used on vertical and horizontal pumps. Generally arranged for automatic operation, the primer is a vane type which is engaged at initial start to prime the pump or when the pump loses prime due to vapour ingress. Once the pump is primed, the primer drive is automatically disengaged by a pressure diaphragm, eliminating the release of any vapour to the atmosphere.

PERFORMANCE

Capacity Range - up to 300 m³/hr
Head: - up to 140m

Albany Pumps

C: A Style centrifugal pumps:

Vertical applications for wet or dry sumps up to 7.5m (24') deep.

BEARINGS AND SHAFTS

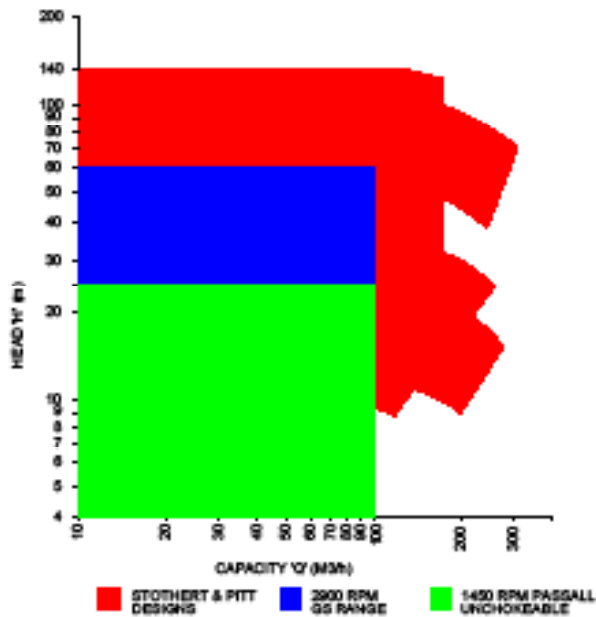
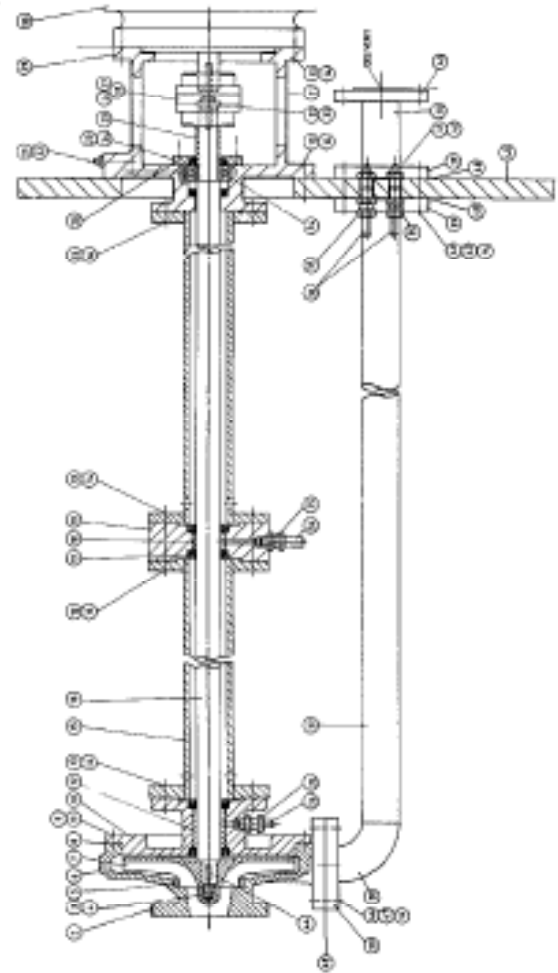
Where sump depths are over 1.5m (5') intermediate bearings are fitted. All bearings can be sealed against the ingress of the fluid being pumped and lubricated from the mounting plate. With clean fluids bearings can be product flushed from the delivery pipe.

Bearings are selected for compatibility with the liquid being pumped and can be suitable for temperatures up to 350°C.

Where the sump depth calls for intermediate shafts these are joined by sturdy muff couplings. Mounting tubes are joined by spigotted flanges to ensure accurate alignment.

When the bottom shaft is made from an expensive alloy, replaceable sleeves are fitted in the bearing area. Bottom shafts can be supplied in hardened materials or with hardfacing treatments.

The motor skirt contains a thrust bearing with grease lubrication. In hot or corrosive applications this bearing is raised above the mounting plate to prevent overheating or damage from corrosive fumes.



Albany Pumps

C: A Style centrifugal pumps:

MATERIALS OF CONSTRUCTION

Pumps are available in Iron, Steel, Stainless Steel and Bronze. Other materials can be provided as dictated by the application. Steel and stainless steel pumps meet API 610.

IMPELLERS

Either unchokeable or shrouded impellers are used. When unchokeable impellers are fitted the pump has an adjustable wear plate. Solids that can enter pumps with these impellers will pass through. All impellers are statically balanced before assembly.

DRIVE AND MOUNTING ARRANGEMENTS

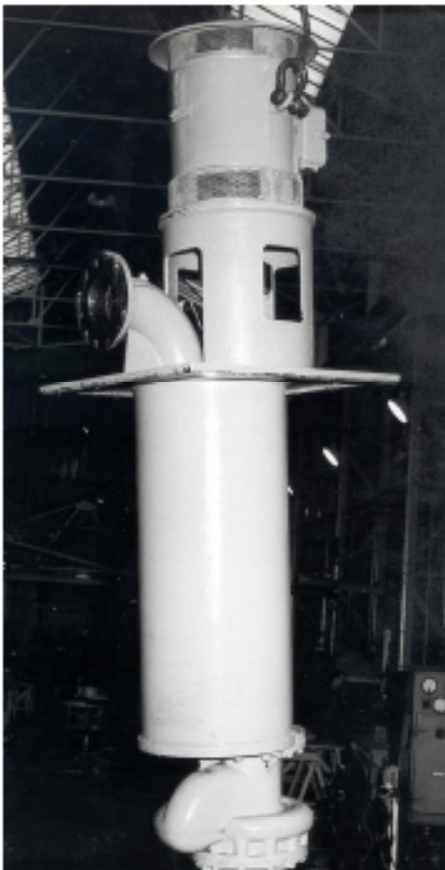
Motor mounting skirts are robustly constructed from steel fabrications or iron castings. A flexible coupling transmits the drive to the pump shaft.

Mounting plates and delivery branches are provided to customers' requirements.

Mechanical seals are available when required and when the application allows their use.

DRY SUMP PUMPS

Where pumps are to be fitted in a dry sump, the pump is fitted with a packed gland or seal.



TANK TOP MOUNTED PUMPS FIT SMALL OPENINGS

The photograph shows one of our small diameter pumps which go into a 508 mm (20") dia. tank opening. These compact pumps are available over the whole range.

OTHER ALBANY PRODUCTS INCLUDE A WIDE RANGE OF:

- Rotary gear pumps
- Twin screw pumps

See separate leaflets